

by

**MagicBox**

User Manual v2.90

Copyright © 2007 MagicBox, Inc.

All Rights Reserved



# Table of Contents

<b>Overview .....</b>	<b>11</b>
<b>Installation.....</b>	<b>13</b>
<b>Hardware &amp; Software Setup.....</b>	<b>20</b>
<b>Getting Started and Publishing .....</b>	<b>20</b>
<b>Creating and Adding Content.....</b>	<b>26</b>
<b>Scheduling and Other Page Settings .....</b>	<b>33</b>
<b>Appendix A - Weather Station .....</b>	<b>66</b>

## About This Manual

Throughout the manual, tips and important items will be highlighted in the following manner:



Text in this style of box represents a helpful tip or important concept in using the Memo system.



Text in this style of box describes very important information to prevent loss of data or damage to your system.

### ✓ Optional Feature

Text in this style of box indicates a feature or component that is not a part of the standard feature set, but is instead available as an optional component to the Memo system.

### 📦 Professional Feature

Text in this style of box indicates a feature that is available only in the Professional edition of Memo Composer software.

## Customer Support

Should you have any questions about installing or using your MagicBox Memo system, visit our website at <http://www.magicboxinc.com> and click on 'Support'. Alternatively, you can contact us any of the following ways:

Phone: 541-752-5542

Fax: 541-752-5614

E-Mail: [support@magicboxinc.com](mailto:support@magicboxinc.com)

## Copyright and Use

This manual and the software described herein are copyrighted with all rights reserved. Under the copyright laws, neither this manual nor the software may be copied, in whole or in part, without the written permission of MagicBox, Inc.

MagicBox®, Memo™, and Memo Composer™ are trademarks of MagicBox, Inc. Other terms, including TrueType, InstallShield, Windows, JPEG, etc., are trademarks of their respective manufacturers.

The backgrounds and fonts present on the Memo CD-ROM are copyrighted by their original distributors and are present under a special arrangement with MagicBox, Inc. These images and fonts are provided for use in commercial and educational video production, broadcast, cablecast, and closed-circuit applications. The image files may not be redistributed in other media, including print; nor may the original image files be translated into other formats for other platforms. The fonts may be used by a single user by any software application which supports them.

These companies are the original copyright holders of the images and fonts included on the Memo CD-ROM. Written permission from the copyright holder is required for uses of images and fonts in media or applications other than those mentioned above.

Dimension Technologies, Inc.      100 Sample Backgrounds  
4612 NE 20th Avenue  
Ocala, FL 34479

The BeOS logo is a trademark of Be, Incorporated.

## Credits

### Memo Composer Software:

Lead Programmer: Karl Ott

Concepts and Original Design: Bob Richardson

Director / Producer: Karl Frederick, VP of Technology

### Memo Hardware:

Case Design, Video-Out Hardware: Karl Frederick, VP of Technology

### Memo Playback Software:

Programming team: Karl Ott, Ashish

Concepts and Original Design: Bob Richardson

Contributing Programmers:

Dianne H., George W., JBQ, John F.,

Leo S., Manuel, the team at Be, Inc.

Director / Producer: Karl Frederick, VP of Technology

### Memo Documentation:

Original Director/Producer, Original Manual: Bob Richardson

Manual Composition and Revisions: Darin Starr

## Executive Producer:

Tom Searcy

## Special Thanks:

Garrett Andres, Scott Bowman, Ann Davies, Brad Holland, Ashish

## Warranty

The Memo player unit hardware is warranted against defects in parts and labor for a period of one year from the date of purchase when governed by the standard warranty. This warranty does not apply to damage caused by misuse or external forces such as power fluctuations, extreme temperatures, exposure to excessive moisture, or other acts of nature.

CD-ROMs, Zip disks, or floppy disks are warranted to be free from media defects for a period of ninety (90) days from the date of purchase.

This warranty does not cover shipping and handling charges for any replacement components or merchandise.

Bronze, Silver, and Gold warranties are subject to their own terms and conditions outlined on their respective warranty certificates.

## Software License

### *SOFTWARE PROGRAM LICENSE AGREEMENT* PLEASE READ CAREFULLY

#### COPYRIGHT

*This manual and software described herein are copyrighted with all rights reserved. Under the copyright laws, neither this manual nor the software may be copied, in whole or in part, without the written permission of MagicBox, Inc.*

#### DISCLAIMER

*The software is licensed and delivered on an "as is" basis. Except for the express warranty set forth below, MagicBox, Inc. makes no other warranties, either expressed or implied, by statute or otherwise, regarding the enclosed computer software product, its quality, its performance, its merchantability, or its fitness for any particular purpose. The entire risk as to the results and performance of any program is assumed by you. Should the program prove defective, you (and not MagicBox, Inc. or its dealers) assume the entire cost of all necessary servicing, repair, or correction.*

*Further, MagicBox, Inc. does not warrant, guarantee or make any representations regarding the terms of corrections, accuracy, reliability, currentness, or otherwise; and you rely on the program and results solely at your own risk.*

#### LIMITED WARRANTY

*MagicBox, Inc. warrants that the disks on which this software is recorded are free from defects in material and workmanship, under normal use for 90 (ninety) days after the date of original purchase. If a defect occurs during the 90-day period, you may return the disks to MagicBox, Inc. for a free replacement. The remedy for breach of this warranty shall be limited to replacement and shall not encompass any other damages, including but not limited to loss of profit, and special, incidental, or other similar claims.*

#### LIMITATION OF LIABILITY

MagicBox Inc.'s liability is limited solely to the repair or replacement of the defective product, in its sole discretion, and shall not in any event include damages for loss of use or loss of anticipated profits or benefits or other incidental or consequential costs, expenses, or damages, including without limitation any data or information which may be lost or rendered inaccurate, even if MagicBox, Inc. has been advised of the possibility of such damages. Some states do not allow a limitation on how long an implied warranty lasts, or limitation of incidental or consequential damages, so the above limitations or exclusions may not apply to you. This warranty gives you specific legal rights, and you may also have other rights which vary from state to state.

#### LICENSE RESTRICTIONS

The licensed software and all associated documentation, and all proprietary and intellectual property rights therein, are and shall remain the exclusive property of MagicBox Inc. Licensee agrees not to (a) modify, adapt, alter, translate, or create derivative works from the licensed software or associated documentation, except as expressly permitted; (b) reverse engineer, de-compile, disassemble or un-assemble in any way the licensed software; or (c) distribute or disclose to others the licensed software or associated documentation.

#### MISCELLANEOUS

This agreement represents the entire understanding regarding the programs and related documentation and supersedes any prior purchase order, communications, or representations. MagicBox, Inc. products and services are interoperable only with specific 3<sup>rd</sup> party products and services, the definition of which is reserved solely and without limitation at MagicBox, Inc.'s discretion, and may be changed without notice at any time. Contact MagicBox Inc. for a list of approved 3<sup>rd</sup> party vendor products, services and/or limitations. This agreement may only be modified by an officer of MagicBox, Inc. If any provision of the agreement shall be deemed unlawful, void, or for any reason unenforceable, it shall be deemed severable from, and shall in no way affect the validity and enforceability of the remaining provisions of the agreement.

This license agreement shall be governed by the laws of the state of Oregon.

## Standards and Regulatory Compliance Statements

This device has been subjected to laboratory tests by a certified testing facility, and has been found to conform to the following standards and specifications:

UNITED STATES: FCC Part 15 Subpart B Section 15.109 and 15.107 Class A; ANSI C63.4 (1992) method.

CANADA: ICES-003 Class B using : FCC Part 15 Subpart B Section 15.109 and 15.107 Class A; ANSI C63.4 (1992) method.

#### *Federal Communications Commission (FCC Statement)*

This equipment has been tested and found to comply with the limits for a Class A digital device, pursuant to Part 15 of the FCC Rules. These limits are designed to provide reasonable protection against harmful interference in a commercial installation. This equipment generates, uses, and can radiate radio frequency energy. If not installed in accordance with the instructions in this manual, harmful interference to radio communication may occur. However, there is no guarantee that interference will not occur in a particular installation. If this equipment does cause interference to radio and television reception, which can be determined by turning the equipment off and on, the user is encouraged to try and correct the interference by one or more of the following measures:

Re-orient or relocate the receiving antenna.

Increase the space between the equipment and the receiver.

Connect the equipment into an outlet on a circuit different from the one to which the receiver is connected.

Consult the dealer or an experienced radio/TV technician for help.

If necessary, the user should consult the dealer or an experienced radio/television technician for additional suggestions. The user may find the following booklet prepared by the Federal Communications Commission helpful: "How to Identify and Resolve Radio-TV Interference Problems". This booklet is available from the U.S. Government Printing Office, Washington, DC 20402 by ordering Stock No. 004-00000345-4.

**WARNING:**

A grounded-type power cord is required in order to meet the FCC emission limits and also to prevent interference to the nearby radio and television reception. It is essential that only the supplied power cord be used. Use only shielded cables to connect I/O devices to this equipment.

*Canadian Doc Notice  
For Class B Computing Devices*

This digital apparatus does not exceed the Class B limits for radio noise emissions from digital apparatus as set out in the Radio Interference Regulation of the Canadian Department of Communications.

Le présent appareil numérique n'émet pas de bruits radioélectroniques dépassant les limites applicable aux appareils numériques de la class B prescrites dan le Règlement sur le brouillage radioélectrique édicté par le ministrère des Communications du Canada.

## Important Safety Instructions



The following instructions describe how to prevent physical injury to yourself or others, as well as how to prevent damage to the unit. Read these instructions thoroughly before attempting to install your unit.

1. Disconnect the device from the main power supply before cleaning. Do not use any liquid or aerosol spray cleaners.
2. To avoid damage to the device, use only accessory parts permitted by the manufacturer.
3. The device must be protected against moisture.
4. To set up the device, it must be put in a stable horizontal position. Tipping it over or dropping it may cause injuries or damage to the equipment. Only use safe setup locations, and follow the setup instructions of the manufacturer.
5. The ventilation openings are used for air circulation which protect the device against overheating. Do not block the ventilation openings.
6. To connect the device, follow the connected load values of the main supply.
7. For electrical safety, the wall socket must be equipped with a nonfused grounded conductor contact.
8. The power cable must be positioned in a way that nobody may trip over it and excessive strain is not placed on it. There should be nothing resting on the cable.
9. All instructions and warning remarks on the device must be followed.

10. If the device will not be used for a long time period, it should be disconnected.
11. Absolutely no objects or liquids should enter the device via its openings. This could cause a fire or an electrical shock.
12. Do not open the device unless instructed to do so by an authorized customer service personnel.
13. If any of the following conditions occur, the device must be disconnected from the main power, and it must be checked by a qualified service center:
  - A. Either the power cable or power plug is damaged.
  - B. Liquid has entered the device.
  - C. The device was exposed to moisture.
  - D. When the device does not operate according to the manual, or you do not achieve any improvement with the aid of the manual.
  - E. The device has been dropped and/or the casing is damaged.
  - F. The device gives off excessive heat or a burning smell.
  - G. When the device shows obvious signs of a defect.
14. For repair, only original spare parts or parts in accordance with the original specifications may be used. Use of unsuitable parts can cause more damage and may void your warranty.
15. Please contact the manufacturer for all questions concerning service and repair.
16. The power outlet must be located in close proximity to the equipment and must be easily accessible.



# Overview



The Memo Digital Signage and Video Messaging system allows you to create slides and other content on your PC with graphics and text which can then be played back on numerous types of video monitors using the Memo unit.

A variety of applications can be served by an Memo, including advertising, announcements, schedules, point of sale displays, and more. Use the Memo wherever you have one or more monitors that need to display messages in the form of still images, video, and crawling text.

## Hardware

The Memo unit is a dedicated player in a rugged rack-mount case. It features high quality output, quiet operation, and an easy-to-use interface with a keypad remote control.

The back panel has a variety of connections for attaching various monitors and accessories to the unit. These connectors are described later in this manual.

## Software

Each Memo unit comes with a copy of MagicBox's Memo Composer software. This software can be installed onto a Windows (2000, XP, or Vista) computer allowing you to generate pages with backgrounds, text, and images and other content to be displayed on an Memo system.

Backgrounds can come from many sources, including other Windows applications, your own scanned photos or digital camera images, the MagicBox background libraries, and more. You can copy and paste text directly into Memo Composer from other programs such as Microsoft Word, Corel Word Perfect, Netscape, etc.

## Publishing

The act of transferring your content from the PC it was created on to the Memo system for playback is called Publishing. With the Memo system, several publishing options are available

**Ethernet** – All Memo systems include built-in Ethernet support, allowing you to place the Memo on a network of any size for high-speed transfers.

**Direct serial** – All Memo systems include a 10ft serial cable that can be connected between the PC and the Memo, using an available 9-pin communications port. Serial transfers are slower than Ethernet, but very simple to set up.

**Modem** – Publish to the Memo over standard phone lines with the optional modem package. Slower than direct serial, modem transfers are recommended only if other methods are not available.

**Removable media** – You can also publish to USB Flash drives. After publishing to the USB drive, simply remove it from the PC, and insert it the disk or drive into the Memo. The project will be transferred and played automatically.

All of these publishing methods are described in detail later in this manual.

Once published, the Memo retains the projects on its built-in hard drive. The hard drive has a capacity for a nearly unlimited number of images (10,000+). However, capacity may vary depending on other types of content sent.

## Terminology

Here are some terms associated with the Memo that will be used frequently throughout this document:

**Publishing:** The act of sending finished content to the Memo unit for playback

**Page:** Also called a slide, or frame – a single screen of content.

# Installation

## Box Contents

Before you begin setup of your Memo unit, make sure that the following components are included in the original packaging:

- ☑ Memo Main System Unit
- ☑ Control Keypad
- ☑ Power Cord
- ☑ BNC to RCA Adapter Plug
- ☑ BNC Video Cable
- ☑ S-Video Cable
- ☑ Null Modem Serial Cable
- ☑ Memo Composer CD-ROM
- ☑ 1/8" Audio Cable
- ☑ This User Manual
- ☑ Warranty/Registration Card

Be sure to fill out and send in your registration card as soon as possible. We must have your registration card on file to be able to provide support and product updates.



You may also register by visiting our web site at [www.magicboxinc.com](http://www.magicboxinc.com)

## Hardware Installation

The Memo's chassis is a 4U rack space enclosure. Ideally, the Memo will be installed in a rack mount case or cabinet in a climate-controlled room.

If a rack mount installation is not available, the Memo unit should be placed on a stable, flat, level surface.

Take care to ensure that the unit is not placed where it may be easily knocked over, have its cords tripped over, or have liquids spilled into it.

The Memo unit warranty does not cover damage caused by accidents or misuse.

All of the Memo's connections are found on the rear panel, shown below.



Your Memo system may appear different than the one pictured above.



You must unplug the power cord before adding or changing any connections. Failure to do so may damage your Memo unit.

## About Television Standards (NTSC/PAL)

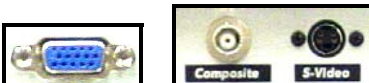
Different parts of the world use different television standards.

The standard used in most of North America is called "NTSC". The standard used in many European countries is called "PAL".

When using Composite or S-Video, the Memo can operate in either the NTSC or PAL modes. The mode is set at the factory based on the country to which the unit is shipped. If you need to change this setting, contact MagicBox technical support.

### Connect a Monitor

The Memo unit supports several different types of display devices as shown below:



The “VGA/RGB” port supports any PC-style RGB monitor or compatible plasma monitor.

The “S-Video” port supports professional video monitors with multipin inputs labeled “S-Video”, “S-VHS”, or “Y/C”.

The “Composite Video” port outputs standard composite video which may be connected to a video monitor or a television with “A/V” or “Aux” inputs.



It is recommended that only one output connector be used at a time. The desired output is set in the Memo’s setup menus.

When the setup menus are being displayed, they are sent to all output connectors. However, only the appropriate output connector displays a broadcast-quality signal.

### Connect the Control Keypad



The Memo is controlled by a small keypad. Connect this keypad to a USB connector on the front or back of the player.

Older Memo keypads utilized a PS/2 style connector (round, on the left in the picture above). The bottom (purple) of the two is to be used with that style of keypad.

### Connect the Ethernet Cable (Optional)



Memo units include an Ethernet networking adapter. This connector may be located in the PCI Expansion area on some systems.

If you intend to use the Memo unit on a LAN, connect the network cable here. (Contact your network administrator to help you identify your network’s cable connection if necessary.)



Ethernet networking can be a complex subject. If you are not familiar with terms such as “TCP/IP”, “IP Address”, “Subnet Mask”, etc., We recommend that you have your Network Administrator assist you with the initial setup of the Memo unit.

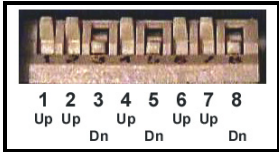
### Connect a Modem (Optional)



If you will be using a modem with your unit, (US Robotics Sportster 33.6 or 56K modems are supported), connect it to the COM1 serial port.

Memo units have 2 communications ports. COM1 is not labeled; COM2 is labeled and is used only for the Memo weather station optional component.

The modem should have its DIP switches set according to the following photo.



Next, connect the phone line from the wall to the modem. Use the plug on the outermost edge of the modem.

Finally, connect the included power supply, and turn the modem on. To ensure proper detection, the modem must be powered on before the Memo playback system.

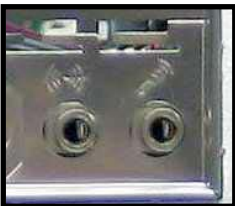
### Connect a Direct Serial Cable (Optional)

If you will be publishing via a direct serial connection, connect the cable from the communications port on the publishing PC to the COM1 serial connector on the Memo. See the section above for help identifying the COM1 port on the Memo.



To publish with a serial cable, you must use a Null Modem serial cable, included with your Memo. A standard serial cable will not work.

### Connect Audio Sources (Optional)



Memo allows for the addition of background music to your playback presentation.

Simply attach an audio source such as a CD player, MP3 player, radio, or PC to the MIC IN connector (the right of the two connectors pictured here), and connect the output (the left connector pictured

here) to speakers or an audio distribution device such as an amplifier or modulator.

### Connect the Weather Station (Optional)

The optional Weather Basic and Weather Deluxe kits feed live weather statistics to the Memo via the Com 2 serial port. Refer to Appendix B for further information.

### Connect the Power

Once you are sure everything is properly connected, connect the power cable to the rear of the Memo unit and then plug it into a power outlet on a surge protector or battery backup unit. Plugging the Memo directly into a wall socket is not recommended.



Ensure that the power standard switch (115V / 230V) is set to the correct voltage for your country. Damage could result if the switch is not set properly.

### Starting the Unit

The Memo unit has a “soft” power switch. When you plug the unit in, it will return to its last power setting, which may have been “on” or “off”.

Normally, the unit should be left on all the time, but if you need to turn off the power (for example to connect expansion devices or to ship the unit), press and hold the power button on the front of the case for 4-6 seconds. The unit will shut down, and then you may unplug the power cable.

Turn the unit on by connecting the power and momentarily pressing the power switch on the front of the unit

The Memo’s boot process can take up to 60 seconds. During this time, the screen may be black (if using Composite or S-Video output) or a series of boot screens will be displayed (VGA only).

After the boot process is complete, the Memo will begin playing pages. If this is the first time your Memo unit has been started, it will play a demonstration project. Otherwise, it will play the default project last published from your PC.

Having successfully reached this stage, your unit is ready to configure. Follow the steps below under “Configure the Memo Unit”.

## Software Installation

To install the Memo Composer software, your computer must meet the following requirements:

- Windows 2000, XP, or Vista
- 50MB Hard Drive Space
- CD-ROM Drive
- Super VGA card with True Color (24-bit or 32-bit) modes (800x600 or higher desktop resolution required)
- Color Monitor



Windows 95, 98, ME, and Windows NT 4.0 are not supported.

### Starting Setup...

Insert the “Memo Composer” CD into your CD-ROM drive. On most Windows machines, the CD should automatically launch the installer. If Auto-Run is disabled on your machine, perform the following:

Click on the “Start” button on the Windows Taskbar. Click on “Run...” Type in the letter of your CD-ROM drive (such as D:\ or E:\ ), and “SETUP.EXE”. For example, if your CD-ROM drive is Drive E, you would type:

E: \SETUP. EXE

If you do not know the drive letter of your CD-ROM, you can click on “Browse...” and find the SETUP.EXE program using the menus that appear.

Once you have entered/found the setup program, click “OK” and it will be launched.

### Using Setup

When the setup program first runs, it will take a few seconds to prepare its files for installation.

After this is complete, the Wise Installer will be started and will guide you through the installation process. You will be prompted for your name, organization, who should be allowed to use the application (current user or all users), and a location to install the application to. If you are unsure on a particular item, simply proceed with the default setting and click ‘Next’.

After the installation is complete, click on the 'Finish' button to exit the Wise Installer application.

An icon will be placed on your desktop that can be double-clicked to launch the application.



Alternatively, you can launch the application via the Start menu, under 'Programs', 'MagicBox', and 'Memo Composer'.

## Serial Key

The first time Memo Composer is launched, you will be prompted to enter a serial key to unlock the application. This 20-digit key is found on the reverse side of the CD case insert on a sticker.



Enter the key in this field exactly as it appears on the sticker, in all caps and with dashes between the sections. When entered correctly, the application will launch, and the main screen will indicate the version of software that was unlocked – Standard or Professional.



Serial keys may contain the number 0 and 1, but not the letters O or I.

# Setup

The Memo unit's functions are accessed using the included wired control keypad.

## Control Keypad Buttons

### Menu

This key will enter and exit the Memo unit's menu system. The menu display will be sent to all the video outputs simultaneously, temporarily enabling any outputs that are turned off.

Exit the menu screen by pressing "Menu" again. The Memo unit will resume playback on its specified output connector.

### Arrows and Select / Enter

When accessing menus, the arrow keys navigate the menus and change the values of selections.

The Select and Enter keys choose a highlighted menu item.

### Esc

Pressing the ESC key will back up to the previous menu level. If you are in a requester that has a "Cancel" button, pressing ESC is the same as hitting "Cancel".

### Opt 1, Opt 2, +, -

These keys are reserved for future expansion.

## The Setup Menus

The setup menus allow you to change some of the settings used by the Memo unit. The changes you make are remembered by the unit even after a power failure. To access the menus, press the Menu key on the control keypad.

The main menu screen, shown below, should appear. The menus are displayed on all outputs simultaneously. After you exit from the menus, playback resumes on the designated output connector.



Use the up and down arrows on the control keypad to highlight a menu item. Once the desired item is highlighted, press the Select key.

Each of the setup menus is described on the following pages.

### Video Settings Menu

The Video Settings menu controls how the Memo outputs video during the playback of projects.



Highlight the output connector you will be displaying to, and press the select key. The Memo can output its signal on the VGA connector, or as Composite Video or S-Video.

**VGA** – When selected, only the VGA connector will output a signal - the composite and s-video connections will be disabled completely.

**Composite/S-Video** – When selected, either or both of the connectors can be used. The VGA connector will display a preview-quality image.

The Memo support both NTSC and PAL display standards. Currently this setting cannot be altered from the Video Settings menu. Systems are sent from MagicBox properly configured for the country they will be used in.

## Set Date & Time Menu

From the Main menu, highlight “Set Date & Time” and press Select. The Set Date and Time menu, below, will appear:



When you create pages on your PC, you can set starting and ending dates and times., therefore it is very important that the date and time on the playback system are set accurately to assure proper playback.

Press the right arrow key to highlight the first 'Date' field.

Use the up and down arrow buttons to change the value of a field, and use the left and right arrow buttons to move between fields. The format is YEAR – MONTH – DAY.

Once you have adjusted the numbers to reflect the current date, press Select to move down to the first 'Time' field.

Use the left and right arrow keys to select which number you wish to modify, and use the up and down arrow keys to change the value of that number. The format is HOUR – MINUTES – SECONDS.



This menu uses 24-hour notation, meaning that hours range from 00 to 23 instead of the usual 1-12 AM/PM. For example, Midnight is 00:00, 8am is 08:00, Noon is 12:00, 1pm is 13:00 and 11pm is 23:00.

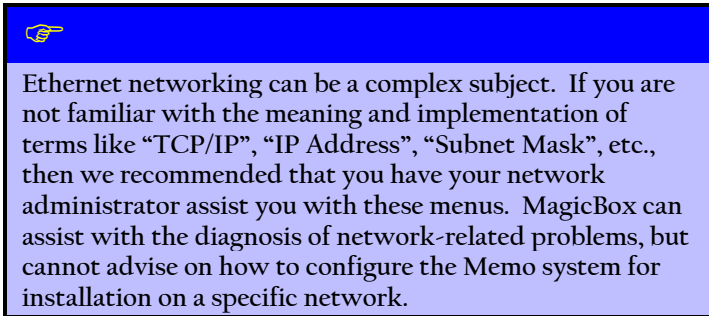
Once you have adjusted the numbers to reflect the current date, press Select to move down to the 'Time' field.

Use the up and down arrow buttons to highlight the desired time zone, and press the Select key to highlight “Set” and press the Select key again to confirm the settings.

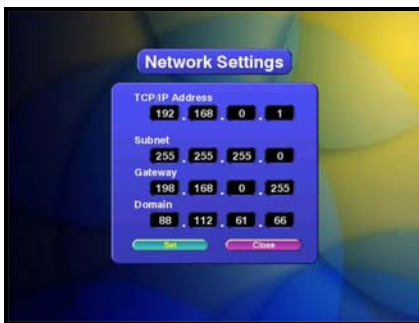
Press the right arrow key and select to return to the main menu.

## Network Settings Menu

All Memo units feature built-in support for Ethernet networking.



All network settings are adjusted by selecting the “Network Settings” menu from the Main Menu screen:



**TCP/IP Address** - Use the left and right arrow keys to select which number you wish to modify, and use the up and down arrow keys to change the value of that number. When you are finished, press the Select key to move down to the Subnet entry.

**Subnet Mask** - Set the Subnet value to the one used on your network the same way you entered your TCP/IP address. (This value is provided by your network administrator). It is important that the Subnet match the Subnet of your network, or communication with the Memo unit may not work. When you are finished, press the Select key to move down to the Gateway entry.

**Gateway** - In some networks, setting just the TCP/IP address may be sufficient. However, in more complex networks, a “Gateway” value is required. Set the Gateway value to the one used on your network the same way you entered the previous two addresses. (This value is provided by your network administrator.)



If you are installing the Memo unit behind a router, the router address must be entered in the Gateway setting before the Memo will talk across the router.

When you are finished, press the Select key to move down to the Domain entry.

**Domain** - In some networks, setting just the TCP/IP address may be sufficient. However, in more complex networks, a Domain Name Server (DNS) may be required, and that address can be specified here. Set the Domain value to the one used on your network the same way you entered the previous three addresses. (This value is provided by your network administrator.)



If you are installing the Memo unit behind a router, the Domain Name Server address must be entered in the Domain setting, or the Memo may not be able to find other machines on the network.

When you are finished, press the Select key to highlight ‘Set’ and press the Select key again to save your settings. Press the right arrow key followed by the Select key to return to the main menu.

### Verifying the Network Setup

Once the Memo networking hardware has been connected and its settings have been configured, your Network Administrator should verify that the network is operating properly.

To verify that data can reach the Memo unit, use a PC on the same network. Open an MS-DOS prompt on the PC, then type in a “ping” command:

```
pi ng x. x. x. x
```

Substitute your IP address for the “x.x.x.x” shown above. For example, if the IP address of your Memo unit is “10.1.1.4”, then you should type:

```
pi ng 10. 1. 1. 4
```

If your network connection is successful, you should see results similar to the following:

```
C:\Windows>ping 10.1.1.4
Pinging 10.1.1.4 with 32 bytes of data:

Reply from 10.1.1.4: bytes=32 time<10ms TTL=255
Reply from 10.1.1.4: bytes=32 time<10ms TTL=255
Reply from 10.1.1.4: bytes=32 time<10ms TTL=255
Reply from 10.1.1.4: bytes=32 time<10ms TTL=255

Ping Statistics for 10.1.1.4:
    Packets: Sent = 4, Received = 4, Lost = 0 (0% loss).
```

If a connection cannot be established between the Memo and your networked PC, you should repeat the hardware and software setup steps, verifying your settings. Pay particular attention to the Memo's IP address and Subnet value.

If the above test still fails, have your Network Administrator contact MagicBox, Inc.

### Installation Menu

The installation menu provides controls for updating the player unit's software (see next section) and restoring either of the two preinstalled demonstration projects.

### System Menu

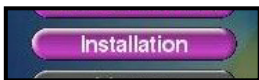
The System menu allows you to turn off or restart the Memo player. When possible, always use one of these options rather than holding in the power switch to shut the player off.

## Updating the Unit's Software

Occasionally, MagicBox will issue upgrades to the Memo software. These upgrades are issued on CD-Rom and available from MagicBox upon request. Use the following procedure to update your Memo with one of these CD's.

### Playback Update Procedure

Press the Menu key on the control keypad to display the Memo menu. Use the arrow keys to highlight the 'Installation' button and press the Select key.

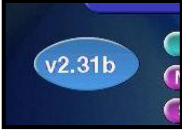


At this time, insert the CD-Rom labeled 'Memo Playback Update' into the CD-Rom drive of the Memo. After a few seconds, you

### Update from CD

will hear the disc spin-up, and the red IDE light and the green activity light on the CD-Rom drive will blink. When this happens, press the Select key while 'Update from CD' is highlighted.

The CD-Rom activity and red IDE lights will blink rapidly while the update is performed. This procedure will take approximately 60 to 90 seconds – afterwards, the CD-Rom drive will automatically eject the disc, and the application will be restarted.



When the Memo has completed its restart, press the Menu key to verify that the new version was installed successfully.



Store the Playback Update CD-Rom in a safe location. In emergency situations it can also be used as a repair disc.

## Memo Composer Setup

This section will describe how to launch the Memo Composer software and configure the program's settings.

### Launching Memo Composer

To launch the Memo Composer software, use these steps:

Click on the Windows "Start" button on the taskbar.

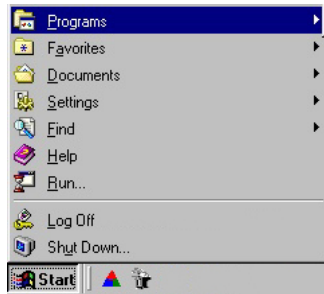
Click on "Programs" or "All Programs"

Click on "MagicBox", and finally...

Click on "Memo Composer"

The program will launch, and you should see a main menu screen similar to the one below.

(The exact size and appearance of menus and text will vary depending on your Windows desktop resolution.)

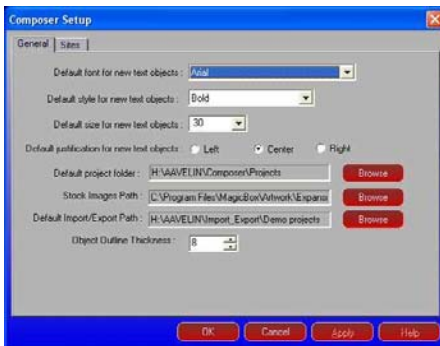




The main menu has the following choices: New Project, Open Project, Delete Project, Publish, Setup, About, and Exit.

## The Setup Menu

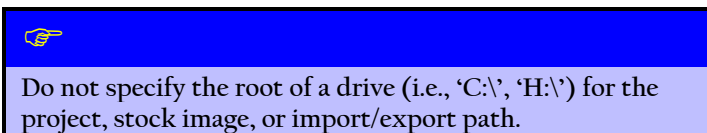
Click on **Setup** from the main menu to enter the setup menu. You will see a window similar to the one below:



### General

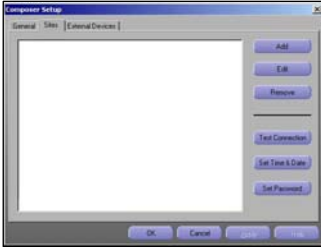
The General tab, shown above, allows you to set the default font style, size, and justification. This saves time if you have a favorite font, as you won't have to change it every time you create a new page or paragraph. The factory setting is "Arial", "40", and "Center".

You can also specify the exact location of project storage, stock images, and Import/Export files (.MBT files); for example, if you are configuring Memo Composer to run from a network server. Normally, these fields are set automatically by the installation program and don't need to be changed.



The “Object Tracker” size controls the thickness of the “handles” of objects in the Page Editor. You can increase this size to make the handles easier to grab for users with disabilities.

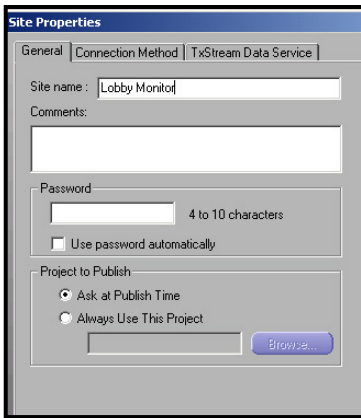
## Sites



A ‘Site’ in Memo Composer is actually a physical Memo playback system. If you have one Memo unit, you will have one ‘Site’ as well. Multiple Memo players will need multiple site entries (Lobby Display, Break room, etc)

The Sites tab is where Memo Composer is configured to publish completed work to your Memo unit(s). When you first install Memo Composer, the list of sites under the sites tab will be empty:

Click on **Add** to create a site description. You will be presented with the window shown to the right:



Enter a name for the site. In the example above, “Lobby Monitor” has been entered. Use whatever short word or phrase that best describes your Memo unit’s location.

Below the site name you may type in whatever brief comment information you’d like, such as a mailing address or contact name and phone number.

The Memo can be password protected to prevent unauthorized users from publishing to it. The **Password** section allows you to have the password sent automatically. Note that the password is actually set elsewhere (discussed at the end of this section), this field is used only to eliminate the need to type in the password every time you publish. Your Memo’s password is defined on the Sites tab of the setup dialog.

The **Project to Publish** section allows you to select a project file to always publish to this site. This will save you a step at publish time, but only if you always use the same file.

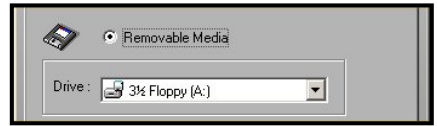
## Connection Method

Depending on the way each Memo unit is connected, there are different ways to set up each site description.

Click on the Connection Method tab and then select one of the following four types:

**Removable Media** - The removable media publish method is for Memo units that are not connected to your PC via serial cable, modem, or Ethernet networking.

At publish time, you will be prompted to insert a removable disk (such as a Zip disk or USB drive), and the pages for your project will be automatically copied to that disk.

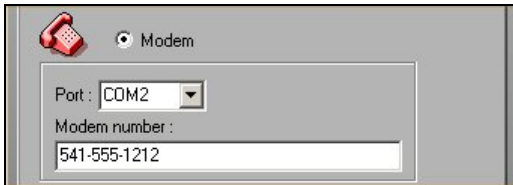


**Direct Serial Connection** - The serial publish method is for Memo units connected directly to your PC via a serial cable. Select the "COM" port that corresponds with the cable connection.



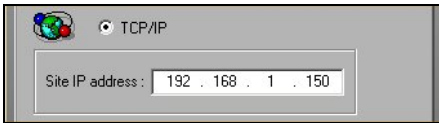
At publish time, Memo Composer will automatically connect with the Memo unit and send over the pages of your project.

**Modem** - The modem publish method is for remote Memo units that are accessed over the phone using your PC's modem. Select the "COM" port to which your PC's modem is connected, and enter the phone # (including any long-distance or outside line access #'s you normally dial) of your Memo unit's modem.



When publishing, Memo Composer will automatically dial the modem and send your project's pages to the Memo unit.

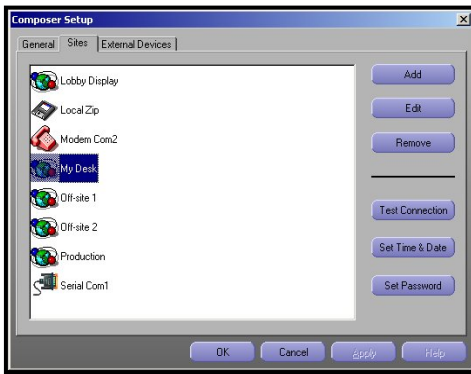
**TCP/IP** - The "Network" publish method is for Memo units that are connected to your corporate LAN or to the Internet.



Enter the IP address of the unit. This must be the same address that has been programmed into the Memo unit at setup time. If you do not know this address, obtain it from your Network Administrator.

When publishing, Memo Composer will automatically connect to the Memo unit across the network and send your project's pages.

## Completing Site Setup



After you have set up your site's name, preferences, and connection method, click on OK. You will be returned to the setup window with the Sites tab still selected. Now your site name(s) will appear in the list, similar to the picture to the left.

The names of the sites will be listed in Alphabetical order, and an icon will appear next to each site name indicating the connection method selected:



Removable Media



Direct Serial



Modem



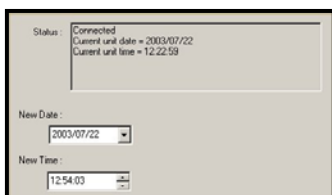
Network

### Test Connection

At this time you can test a connection to ensure your PC can talk to the Memo. Select a site, and click on the "Test Connection" button. If successful, you will see a screen containing this information:



If your test is not successful, double-check all hardware connections, and refer to the Troubleshooting section later in this manual.



## Set Date & Time

Memo Composer can also be used to set the date & time of your Memo system remotely. This is useful if your Memo is remotely located, or in other situations where it may be difficult to

access the system menus through the Memo's keypad.

Select a site, and click on the **Set Date & Time** button.

Composer will connect to the Memo and display the date and time currently set. Make any adjustments necessary, and click on the **Set** button.

## Set Password

The Memo system can be password protected, allowing only authorized users to publish content. By default, Memo systems are shipped with no password. If you wish to set one, simply select your site from the list and click on the **Set Password** button.



Memo Composer will then connect to the system and see if a password is already set. Since this system does not have a password set currently, Composer simply prompts you for a **New Password**. Type in your desired password (4-character minimum), re-type it in the field below, and click on the **Set Password** button.

If there is already a password set, Memo Composer will prompt you for it before allowing any changes.

To remove password protection from an Memo system, simply click on the **Clear Password** button.

## Managing Multiple Users

If more than one person will be creating and/or editing content for your Memo project, additional steps will be needed to ensure that everything runs as smoothly as possible. Memo Composer will work in a multi-machine installation if the following criteria are met:

### File Sharing and Separate Installation

All of the computers which will have Memo Composer must be on the same LAN. Memo Composer opens files using the standard Windows mechanisms. "File Sharing" must be enabled between the machines and the server.

### Designate a "Server"

One machine should be used to store all projects, background files, and user images. Select a machine which will always be turned on and always accessible on the network. This machine will be called the "Server".

It is not necessary to install Memo Composer on the server machine... it will just be used to store project files and images.

Users on other computers will access files which are stored on this machine, so it is important that it remain powered on and connected to the LAN at all times.

Change the paths within Memo Composer setup (default project folder, stock image path, etc) to point to locations on this 'server' using mapped network drives (talk to your network administrator for details).

If the designated 'server' also has Memo Composer installed on it, it is important that this PC use the same mapped network drive letters (effectively referring to itself in the 3<sup>rd</sup> person).

### Do Not Use "Local" Image Files

Users who wish to add an image file or background to a project should copy that file to a designated area on the server. If they use a file which is on their local hard drive, it will not be available when other users attempt to open the project, which could cause undesirable results as images disappear from pages.

### Use Common Fonts

Windows stores fonts locally on a machine. Ensure that all of the fonts on one machine are also installed on all of the other machines. (Observe copyright and royalty restrictions when copying fonts.)

If an individual user wishes to add a font for use in Memo composer, that font will have to be installed on all machines.

### One User at a Time for a Particular Project

While a user has a particular project open, other users should not attempt to open or edit the same project. In such cases, the last person to save “wins”, and any other changes will be lost.

### Publishing Sites

The “Sites” tab in the setup menu will have to be configured for each machine running Memo Composer. If you add a new Memo unit or change its site parameters (phone # or IP address), you will have to change the Site setup in each copy of Memo Composer.

## Getting Started and Publishing

This section will show how to create a new project, open an existing project, manage and work within a project, and change the global project settings as well. These simple steps are necessary before you can begin adding and changing content.

### Creating a New Project

A project is a collection of content that the Memo system will play back in sequence. While the Memo is capable of storing numerous projects, only one can be played back at a time.

Generally, if you own only one Memo unit, you will probably stick with just one project for all your work. Owners of multiple Memo units usually have one project for each unit, although sometimes the same project will be sent to two or more units.



From the Main Menu in Memo Composer, select New Project.

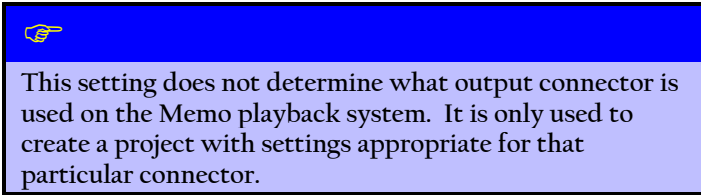
You will now be given some basic options before you can begin creating pages.

### Project Title

Give the project an appropriate name. This will be for your reference only. Also, select the output format for your project.

**Composite/S-Video:** Creates your project in 4:3 aspect ratio, landscape orientation, and 640x480 resolution.

**VGA (Custom):** Allows you to choose the aspect ration, orientation, and resolution of the project.



### Display Type (Aspect Ratio)

**4x3:** Standard aspect ratio for CRT displays (TV's, etc) and some LCD screens.

**16x9:** Widescreen aspect ratio for most plasma and LCD screens.

### Display Orientation

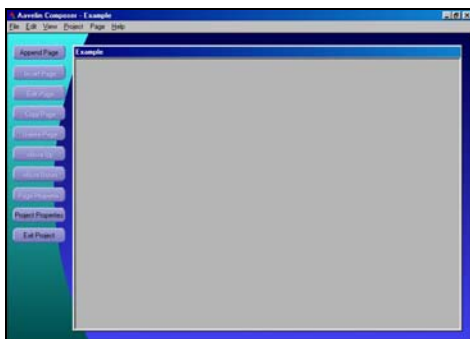
**Landscape:** Orientation where the display is wider than it is tall. Typically considered to be the standard orientation.

**Portrait:** For tilt-axis displays. Select Portrait (left) or Portrait (right) depending on which way the display will be turned.

### Resolution

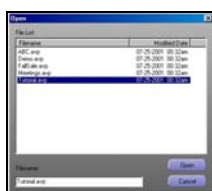
The resolutions available will be dependant on the choices made in the previous steps. Select a resolution appropriate for the display you will be using. Refer to the display documentation if necessary.

Select a resolution and click on the **Finish** button - you will now be taken to the empty project editor. As you add pages to the project (see the chapter titled "Creating and Adding Content"), refer to the "Working within a Project" section later in this chapter for specific details on manipulating pages and changing your project view settings.



## Opening an Existing Project

To make changes to an existing project, simply click on the **Open Project** button from the main Composer screen.



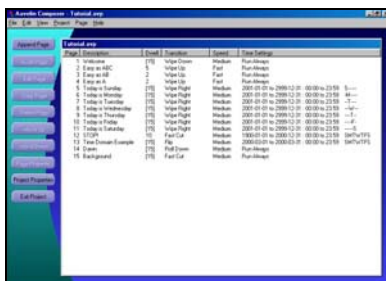
The most recently opened project will already be selected. Simply press enter or click on the **Open** button to resume working on it.

You can sort by Filename or Date Modified by clicking on the respective column headers.

Double-click on a project to open it for editing.

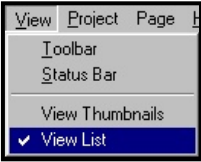
## Working Within a Project

Once a project has been opened, you will be presented with the project overview screen, similar to one of the two samples shown below:



The Memo Composer software can display your project to you in Thumbnail (left) or List (right) views. In List Mode, you can see all of your pages presented in a list. In Thumbnail Mode, you view actual images of your pages in a grid.

Functionality between both modes is identical, only the formatting of the displayed information is different. List mode is often faster when working with a larger project, as it requires less of the graphics card in your PC and consumes less memory.



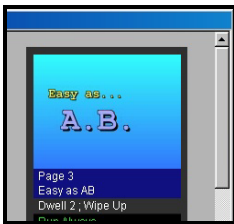
You can switch between the two views at any time by clicking on the 'View' menu and selecting either **View List** or **View Thumbnails**.

Both views display a list of the pages in your project. This list is in the order that the pages will appear when played.



The Project Editor list shows the number and name of each page, the dwell time and transition effect, and other information relating to the scheduled dates and times for a particular page.

If there are more pages than will fit in the view, you can use the scroll bars at the right and bottom to navigate through the list or thumbnails.



## Adding and Removing Pages

New pages can be added to the project using either the **Append Page** or **Insert Page** buttons.

**Append Page** – adds a new page to the end of the project.

**Insert Page** – available only when a page is selected (highlighted) in the project view. This adds a new page to the project immediately before the selected page.

A page can be removed from the project permanently by selecting it and clicking on the **Delete Page** button.

**Copy Page** will create an exact duplicate of the selected page and add it to the project immediately after it. This can be useful if you have created one page to be used as a template, and wish to make numerous variations of it.

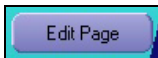
## Re-ordering Pages

After being sent to the Memo system, pages will play back in the order they appear in the project view. Changing the order of the pages is very simple with the provided controls – the **Move Up** and **Move Down** buttons.

Simply select (highlight) a page, and move it up or down in the page order with the appropriate button.

## Editing Pages

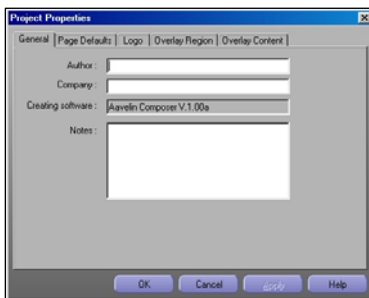
To select a page you want to work on, simply double-click on it in either view. Alternatively, you can click on a page once to highlight it and click on the **Edit Page** button to the left.



Editing a page will open the Page Editor window (standard pages) or bring up the Page Properties sheet (video overlay pages). Both are discussed in the following chapter, “Creating and Adding Content”.

## Project Properties

In addition to every page having its own properties, the Project itself has a set of properties.



Click on the “Project Properties” button and the Project Properties dialog will appear:

The Project Properties dialog allows you to edit supplementary information about your project, set the default dwell, and define content that displays over the top of all pages, such as crawl lines (referred to as “Overlay Regions”).

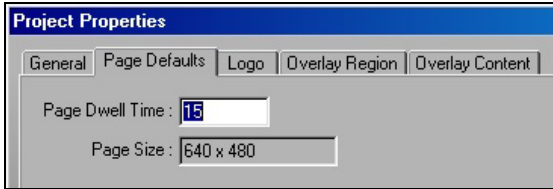
### General Tab

**Author/Company/Notes:** These fields allow you to indicate who created this project, and enter any notes you want to keep.

These fields are for your reference purposes and will not display on the Memo player unit.

**Creating Software:** These fields tell you what program created this project.

### Page Defaults Tab



**Page Dwell Time:** The default “Page Dwell Time” is the duration all pages in a project will be set to when first created, until they are individually set to a user-defined duration.

Try changing this value to 12. When you leave the Project Properties menu, all pages using the default dwell will have changed from 15 (the current setting) to 12.

You can tell which pages are set to use the default dwell by looking at the **Dwell** column in the list. Any page using the default dwell will have its dwell value shown in brackets.

**Page Size:** This is a reference value that indicates the output resolution of all the pages in the current project. This value is set during project creation and cannot be changed.

### Logo Tab

The logo tab allows you to insert a static logo image on screen that will be present throughout the entire project. Allowable image types are .BMP and .JPG.

For more details, view the Logo section of the “Creating and Adding Content” chapter.

### Overlay Region

The Overlay Region tab is used to control the Memo’s overlay region, which is used to display static information at the top or bottom of the screen.

Further information is available in the “Creating and Adding Content” chapter under “Overlay Region”.

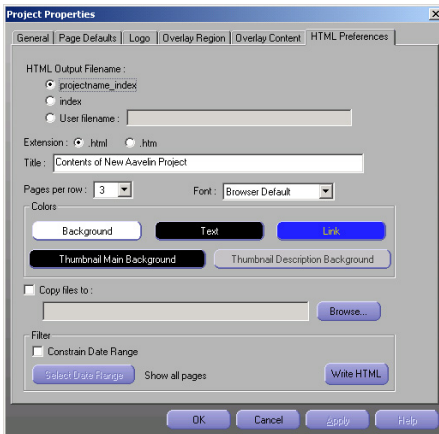
## HTML Preferences

The HTML Preferences tab provides controls to adjust and manage the HTML version of your Memo Composer project. Having an HTML version of your project is a handy way to allow more people to see your pages. The same pages that are running individually on TV can be viewed all at once in a web browser, and the person browsing can then select an individual page to magnify and read.

### Professional Feature

HTML Output is a component of the Professional edition of Memo Composer (part number AVC2)

Each Memo project has its own set of preferences for the web page appearance and other related particulars. You may not need to edit or change these from the default values, however by changing them you can create your own customized web page look.



Here are descriptions of each of the above options:

**HTML Output Filename:** The main HTML file (the place where most users will start browsing) is named here.

By default, the file will be named with your project name, an underscore, and “index”. (For example, “tutorial\_index.html”). The project name is forced to lower case because most web servers are case sensitive and most users tend to type in lower case when typing web addresses.

For any of the filename choices, either “.html” or “.htm” will be appended to all HTML files generated by Memo composer. Select the extension most commonly used on your particular web site. If you do not know, then use “html” which is the most common.

**Title:** The title text is what is displayed at the top of the main web page (as well as in the window title of the user's web browser.)

**Pages Per Row:** The Pages per row value controls how many thumbnail images of your Memo pages are displayed per row in the web browser. If you expect that most people that will be browsing your site are using web browser windows sized about 640x480, you don't want to have too many pages per row. A value of 3 or 4 typically works well.

**Font:** Select the font that will be used on the index page and the individual page view as well. Font selection is limited to HTML standard fonts to maintain consistency.

**Colors:** These settings affect the colors used in the HTML documents. (The actual colors of your Memo pages are unchanged.)

The **Background** setting is the main web page background. The **Text** setting is for any text in the HTML page.

The **Link** setting controls the color of the borders around the thumbnail images that the user can click to zoom into a page. (Visited links will appear slightly darker, and active links that the user is clicking on will temporarily appear slightly lighter.)

All thumbnails are arranged in a table with one color surrounding the thumbnail and another around the textual description of the thumbnail. **Thumbnail Main Background** and **Thumbnail Description Background** control these colors.

**Copy Files To:** The HTML files are saved in the same directory as your Memo project, which by default is:

C: \Program Files\MagicBox\Memo\Projects\

If you have a project called "Channel33", then the HTML files and all the associated JPEG files can be found in:

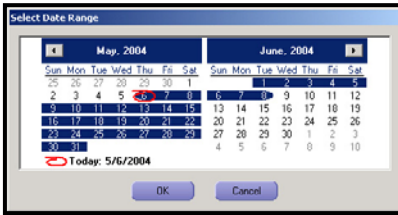
C: \Program Files\MagicBox\Memo\Projects\Channel 33\

You may then copy these files to your remote web server using your favorite FTP program, or, if your web server is located directly on your LAN, you can instruct Memo Composer to copy all the files automatically every time you save.

If your web server is on your LAN, or if you want to share these files with users who have access to a different folder on your machine, you can optionally specify a folder where all the HTML files and JPG files will be copied every time they are updated.

Click on the browse button to specify the output folder. (Make sure that the Copy files to box is checked if you want this feature to be active).

**Filter:** Check the **Constrain Date Range** box if you wish to restrict your HTML content to a specific range of days. Once checked, click on the **Select Date Range** button to open the calendar control.

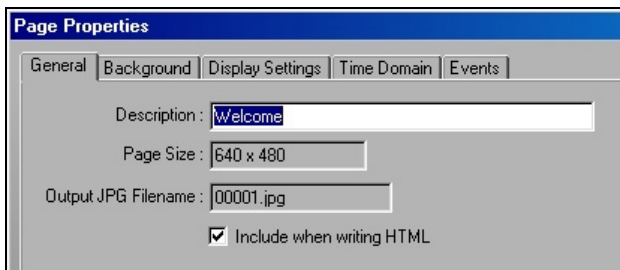


Click on the desired beginning date and drag the selection to the desired ending date. The date range can be up to 6 weeks. Press **Ok** when finished.

Click on the **Write HTML** button to generate (or update) the HTML pages for the project. Note: the project must be saved prior to writing HTML.

### Omitting Specific Pages

Sometimes you may not want a page from your project to show up in the HTML version. For example, a page that is still being constructed.



To omit a particular page, go to the “Page Properties” dialog for that page, and then remove the checkbox next to **Include when writing HTML**.

### Importing and Exporting

Memo Composer allows you to import and export pages. This makes it easy to share pages between different projects, PC's, or both.



## Exporting Pages

When exporting pages, the content elements are written to an import/export file (XXXXXXXX.MBT). This file contains all information about the exported content – text, object placement, page scheduling, as well as custom fonts and images. All of this information is retained when a page is imported back into a project.

To export a page, select a page and click on the **Export** button. Alternatively, you can right-click on a page and select **Export** from the context menu. The following dialog appears:



**Append to existing import/export file:** This adds the selected page to an existing .MBT file. One .MBT file can contain multiple exported pages. After selecting this, you will be prompted to select an .MBT file to append to. The default folder for .MBT files is specified in Composer setup.

**Create new import/export file:** Creates a new .MBT file. Additional pages can be added as desired. After selecting this, you will be prompted for a location and filename to create. The default folder for .MBT files is specified in Composer setup.

**Abort:** Cancels the export function.

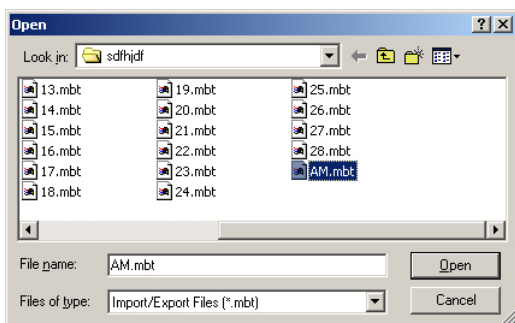
## Importing Pages

Once a page – or collection of pages – has been exported, the .MBT file can be transported to another system, imported into a different project, or both.


Importing a page or pages from one of these .MBT files is very simple. Open the project you wish to import to, and click on the **Import** button.



This will open a file requester – select the .MBT file you wish to Import and click **Open**

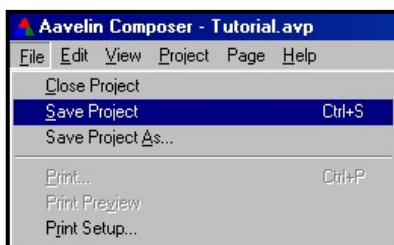


The pages contained in the .MBT file will be appended to the end of the project. If a page is selected in thumbnail or list view, the imported pages will be inserted before the selected page.

 Video Overlay pages cannot be exported or imported at this time.

## Saving Your Work


As you create and edit pages, it is important to save your work as you go along so that if the power fails or your computer has problems, you don't lose all the changes you have made.



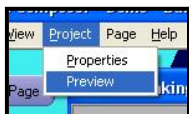
To save your changes to the project, you can either exit from the project editor (you will be asked if you want to save the changes), or you can click on the Save option under the “File” menu.

## Previewing your Project

Memo Composer's Project Preview feature let's you watch your project on your PC before publishing it to the playback system. This is a great way to check page timing, layout, and view the overlay regions and other project elements.

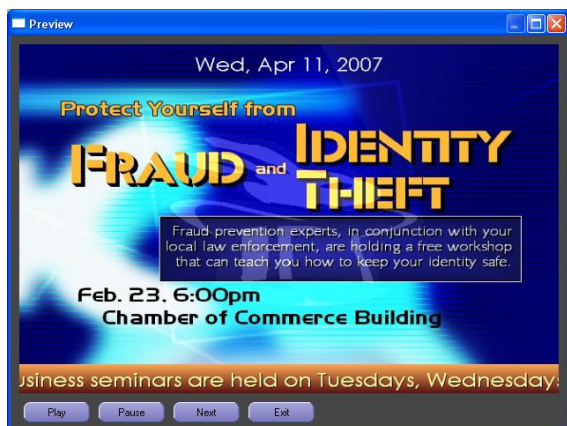
 **Professional Feature**  
Project Preview is a component of the Professional edition of Memo Composer (part number MC2)

To launch the preview window, simply click on the Project menu at the top of the screen, and select Preview.



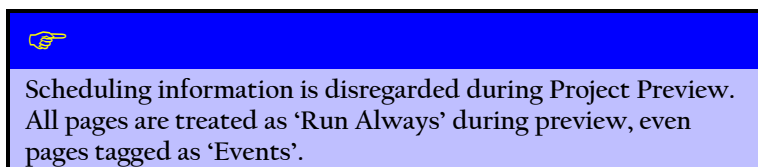
This will begin the preview from the first page in the project.

Alternatively, you can right-click on a page and select **Preview** from the context menu. This will begin the preview from the selected page.



The preview window provides controls to pause and resume playback (**Pause**, **Play**), advance immediately to the next page (**Next**), and exit the preview window.

Without intervention, the preview window will automatically advance pages and overlay region items according to the dwell times that have been programmed.



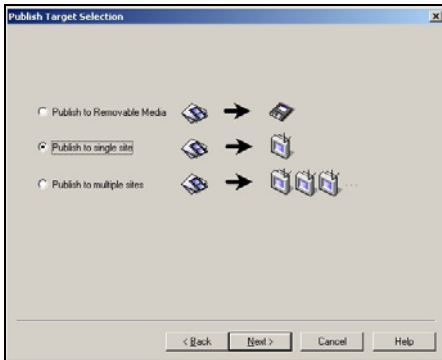
## Publishing to a Memo Unit

Now that you have completed the tutorial exercises, you can play back the results on the Memo unit. The process of transferring a project to the Memo unit is called "Publishing".

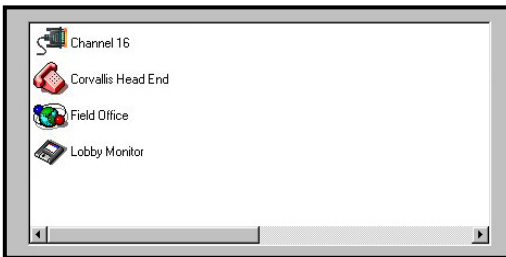


To publish a project file, click on the **Publish** button from the main menu.

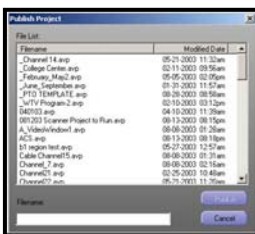
The Publish Wizard will now appear. The first step in the Publish Wizard is selecting if you want to publish to removable media, to a single site (Memo Composer supports sending projects to multiple Memo units. Each unit is referred to as a “site”), or to multiple sites in one publish session:



For the purposes of this tutorial, select the **Publish to Single Site** method and then click **Next**. The other publish methods are described in the Reference section of this manual.



The Publish Wizard will now ask you to specify a destination site for publishing. (You should have created an entry for your site earlier in the Setup section of this manual). Select your site from the list.

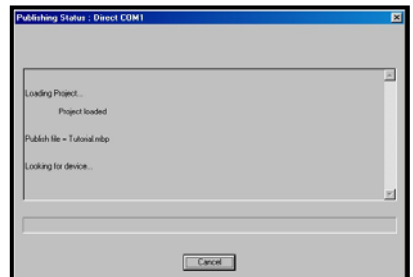


Now click on **Finish**. A file dialog will appear asking you to select a file to publish.

As a convenience, the most recently opened project will already be selected. You can also just double-click on the file name as a shortcut.

The software will now start the publishing process. A progress window will appear:

The contents of the progress window will vary depending on the publishing method for your site. You should see that the software is attempting to contact your unit, and the names of the files being sent. If your site uses



“Removable Media”, then you will be asked to insert a disk for copying.

# Creating and Adding Content

Content is the artwork and programming that make up the visual and aural components of your project. Content can be a simple graphic, a block of text, background music, a DVD, and more. Memo content can be divided into a few simple categories:

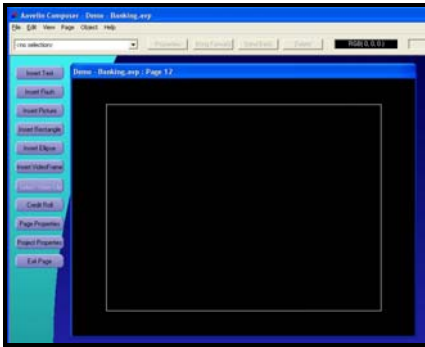
**Standard Pages** – made up of elements such as text, graphics, Macromedia Flash, and smaller video frames (picture-in-picture)

**Overlay Region** – static text messages, date and time, or weather information (optional) positioned at the top or bottom of the screen.

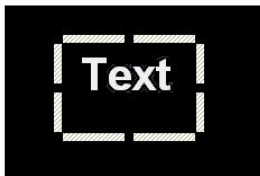
**Logo** – a static logo image on the screen

## Pages

Append or insert a page into your project and give the page a description, click on the **OK** button and the new page is shown in the page editor, where all design and arrangement takes place.



Elements added to pages such as text, graphics, Flash, etc, are inserted onto the page editor as objects, which can be manipulated easily with the mouse. Each object also has a series of property sheets, which are discussed later with each specific object.



Insert a text object into the page editor by clicking on the **Insert Text** button. You will see an object appear on the page with the word “text” inside the object tracker handles, or bounding box.

The object can be moved around on the page by clicking on any section of the white object handles, holding down the mouse button and dragging the object. The object can be resized by clicking and dragging any of the black points on the outline.

The page editor consists of several elements that facilitate page creation.

### Object Selection Toolbar

As objects (text, graphics, etc) are added to the page, they are listed in the drop-down list in the object selection toolbar. Using the toolbar to select and manipulate objects is often easier than attempting to select or highlight an item in the page editor, as the editing window can become crowded with overlapping objects in more complex pages.



Controls are provided to access the **Properties** sheet for the selected object and to **Delete** the object. **Bring Forward** and **Send Back** provide layering controls. In the example below, a rectangle is shown in front of a text box, obscuring it completely in the first picture. Select the rectangle, click on the **Send Back** button, and the second picture shows the result.



To the right of the object selection toolbar are two additional tools – a dynamic color display, and information about the currently selected object.



As you move your mouse around the page editor, the dynamic color display will change to show the RGB value of what is immediately under the mouse cursor. This makes it very easy to match colors, if you are creating content in 3<sup>rd</sup> party graphic programs as well.

The object **Position** and **Size** indicators show details about the currently selected object (position in X, Y coordinates, size in width, height). This can simplify the process of aligning multiple objects, as an example.

## The Safe Text Area Guides

Notice the rectangle inside the page editor near the border of the window. This rectangle represents what is called the “Safe Text Area”, or sometimes the “Safe Title Area.”

Computer monitors and television screens are somewhat different in how they display images. A computer monitor shows you the entire image, usually surrounded by a thin black border. On a television screen, however, the image is stretched slightly so that it goes past the plastic bezel of the picture tube, creating the appearance of a picture that goes from edge to edge without any border. This process is known as “Overscan”.

The problem with overscan is that no two TVs are adjusted the same, and will “waste” varying amounts of display area. This means that any text you have near the edge of a display, although it may look OK on *your* TV, might get chopped off on a different one.

This problem has led video professionals to define what is known as the “Safe Text Area”. Text placed inside this area will show up for sure on any TV that isn’t terribly out of alignment. In Memo Composer, this area is represented by the thin rectangle.

## Backgrounds

A page background is an image or color pattern applied to the entire page area. The background is always behind everything else and is not considered an object, so it will not appear in the object selection toolbar. Images set as page backgrounds will by default be stretched or shrunk down to fill the entire page area.

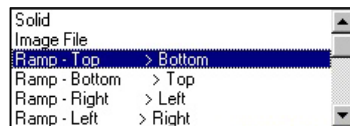


Double-click on a blank area on the page. The Page Properties dialog will open. Click on the Background tab.

Select a background type using the pull-down menu. Select from Solid color, Image File, or one of many different ramp options (a fade from

one color to another).

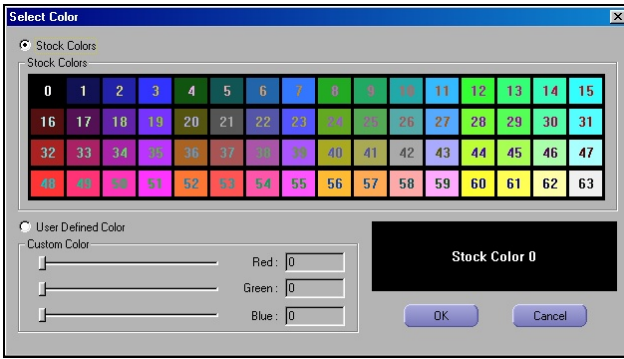
Horizon, Vertical/Horizontal splits, and Left Third are ramps with slightly more complex patterns.



Depending on the background type selected, some or all of the Color 1 through Color 4 buttons will be enabled (Solid uses Color 1 only, most ramps use 1 and 2, the more complex patterns use all 4).



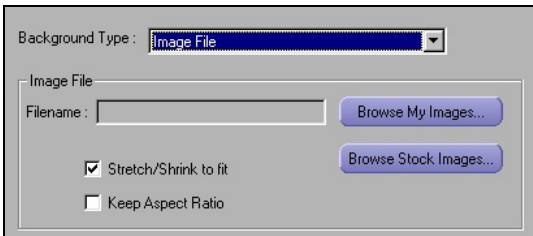
Double-click on one of the enabled color buttons to select a particular color using the color picker tool.



Memo Composer lets you select from a palette of 64 predefined colors designed to look good on video. You can also design your own custom colors by selecting **User Defined Color** and adjusting the red, green, and blue slider bars as desired.

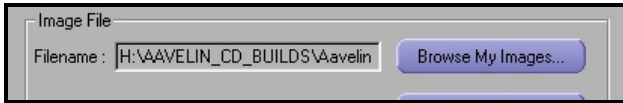
The Page Background can also be an image file. The Memo Composer software includes 100 backgrounds to get you started, but you can use backgrounds from just about any source in one of the supported file formats (.BMP, .JPG, .JFIF, .PCD, .PCX, .PNG, .TNG, .TIF, .WMF, and .WPG).

Select **Image File** and the controls in the Image File area (such as “Browse”) become enabled:



Click on the **Browse Stock Images** or **Browse My Images** button to select a background file (the ‘Stock’ images path is defined under Memo Composer setup, ‘My Images’ will open whatever folder you last accessed an image from).

Click on an image once to select it and a preview of it will appear below. Confirm your selection by clicking on the **Open** button. You will be returned to the Page Background dialog, and note that your selection is now shown in the file name space.



**Stretch/Shrink to fit:** This option is enabled by default. Unchecking it will allow the image to be displayed at its native size, if it is something other than the dimensions of the page.

**Keep Aspect Ratio:** Disabled by default. Used in conjunction with the Stretch/Shrink to Fit option, checking this box will potentially increase or decrease the size of the image as much as possible without distorting the aspect ratio of the original image.

Click on “OK” to return to the Page Editor and see your selected background.

## Text Objects

Text within Memo Composer is handled as an object on a page, or potentially a series of objects. For each block of text that is to have its own unique font, size, or color, a separate text object will be needed on the page.



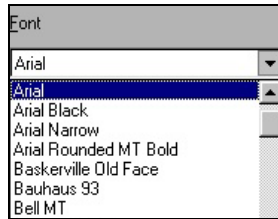
This image demonstrates in an extreme fashion the differences that can be achieved between multiple text objects.

Add an initial text object to a page by clicking on the **Insert Text** button in the page editor.


To edit the text, simply click inside the box and you will see a familiar blinking cursor. You can type in text manually, or paste from an existing document (text formatting will be stripped during the copy/paste process).

Text objects can be moved and resized like other objects by clicking on and dragging the object outline.

Every text object has a collection of Properties that affect the appearance of the text, such as font style, size, color, outline, and shadow. To access the Font Properties dialog, simply double-click on a selected text object, or “right click” using the right mouse button and then select “Properties > Font”.



Feel free to experiment with the text properties, including changing the font and color, and then click “OK” or “Apply” to see how they appear on the page and are affected by the tracker control.

 Memo Composer relies on the Windows font list to determine what fonts are available. Additional True Type fonts can be installed via the Fonts applet in Control Panel.

The **Background** tab of the text properties dialog controls the background of the text object only. Adjust these values to give a backdrop to the text in the object, which can help it stand out from the rest of the page.

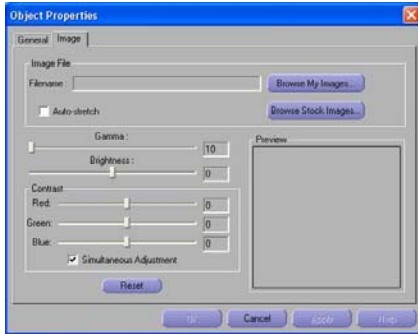
The **Spell Check** tab of the text properties dialog will display the text contained in the object and a **Check Spelling** button.



Click on the **Check Spelling** button and any misspelled words will be identified, and a prompt for action will be displayed.

## Images

Image objects differ from background images in that they can be resized and positioned freely in the page editor like other objects. To add an image to your page, simply click in the **Insert Picture** button in the page editor.



The image object will be added on to the page and the properties dialog for it will be displayed automatically. An image must be selected before the **OK** button is enabled. Clicking on the **Cancel** button will close the dialog and remove the object from the page.

Click on the **Browse Stock Images** or **Browse My Images** button to select a background file (the 'Stock' images path is defined under Memo Composer setup, 'My Images' will open whatever folder you last accessed an image from).

Click on an image once to select it and a preview of it will appear below. Confirm your selection by clicking on the **Open** button.

**Auto-Stretch:** Checking this box will enlarge the image so that it occupies the entire screen.

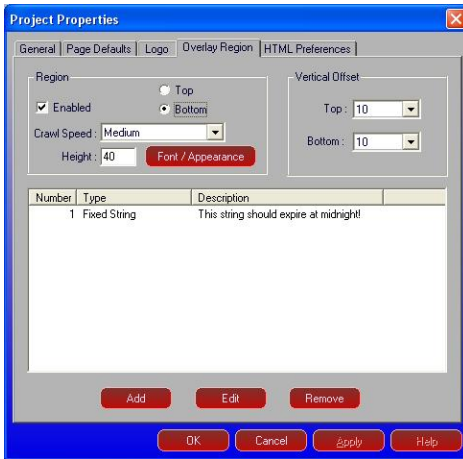
Controls are also provided to adjust the **Gamma**, **Brightness**, and **RGB Contrast** of the image.

## Overlay Regions

The Memo system has the capability to display messages that are superimposed over all (or most) pages in a project. This is referred to as an "Overlay Region".

Overlay messages can be text, date and time, or weather variables.

To access the overlay region, click on 'Project Properties' and select the 'Overlay Region' tab.



**Vertical Offset:** If your crawl region appears slightly outside of the viewing area on a television (tops or bottoms of letters getting cut off), you can use the Vertical Offset tool to bring them into view.

**Top** – This value determines the number of pixels the region will be moved down from the top edge of the display, when positioned at the top.

**Bottom** – This value determines the number of pixels the bottom region will be moved up from the bottom edge of the display, when positioned at the bottom.

### Enabling and Defining a Region

To turn on the overlay region, simply check the 'Enabled' box and select **Top** or **Bottom**.

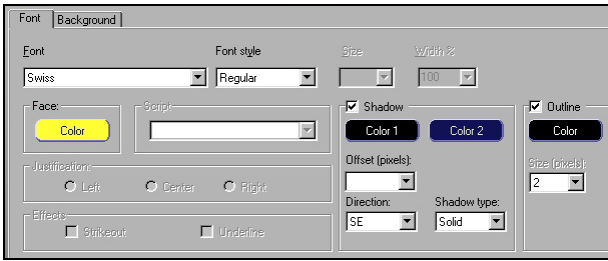
Once a region has been enabled, the speed, height, and appearance can be modified, and content can be placed in it.

**Crawl Speed:** The speed the crawling region items will crawl at. This value is the same for all region items in a specific region.

**Height:** The height, in pixels, of the region. The default value is 40. It is important to note that this is not the point-size of the font, but the size of the entire region. The font-size adjusts automatically to fill the region size, as defined here.

**Font/Appearance:** Each region's appearance can be set independent from the others.

This Font dialog works in much the same way as with Text Objects in the Page Editor.



Font type, style, outline, and shadow can all be customized.

The Background tab of this dialog defined the region's backdrop.



Available choices are Transparent (no background), Solid (one color), Ramp (two colors), and Pattern (two colors).

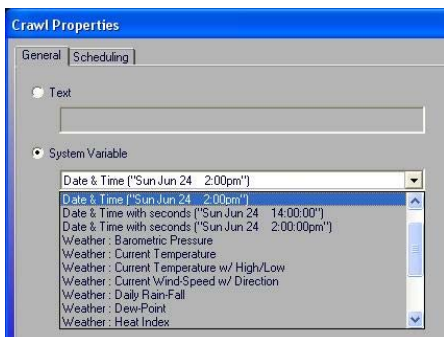
## Adding Region Content

Enabling a region and defining its appearance is the first step. The second and final step is creating the text and variables to display in that region.

Number	Type	Description
1	System Variable	Date & Time ("Sun Jun 24 2:00pm")
2	Fixed String	Thanks for watching!

In this example, our region has 2 items – it will display the date and time, and then a message that simply says “Thanks for watching!”. These two items will repeat in a simple loop. Adding more content items will simply create a larger loop – after the last item in the list is displayed, it will go back to the first.

Content is added to this list by clicking on the ‘Add’ button under an enabled region, and the Crawl Properties dialog is displayed:



Select the type of message you want to display.

**Text:** Type in the desired text message. This message can be as long or short as desired. Text can be copied from another program (word processor, etc) and pasted into this field as well.

**System Variable:** Display one of the pre-defined system variables. Available options are as follows:

Date & Time (12 or 24 hour)

Date & Time with Seconds (12 or 24 hours). This option is not available if mode is set to crawling.

Weather – these items are described in detail in the section titled ‘Memo Weather System Reference’.

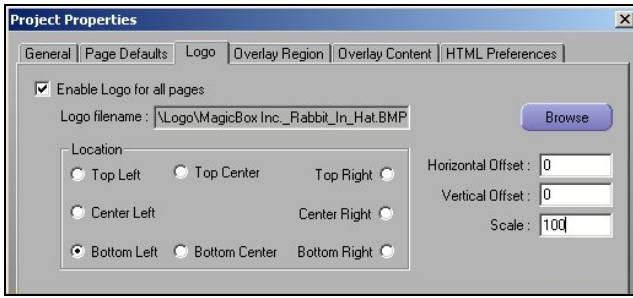
## Scheduling

The scheduling tab of the crawl object properties sheet allows you to set one or more scheduling conditions for each item in a crawl region. Scheduling controls are the same as those for pages. Refer to the “Scheduling” section of the “Scheduling and Other Page Properties” chapter.

## Logo

The logo tab allows you to insert a static logo image on screen that will be present throughout the entire project. Allowable image types are .BMP and .JPG.

Check the “Enable Logo for all pages” box, and click on the “Browse” button to select your logo image.



**Location:** This is the starting on-screen location for the logo image. Placement can be fine tuned using the Horizontal and Vertical Offset values.

**Horizontal/Vertical Offset:** Allows for more precise placement of a logo image. Horizontal offset will move the image up by the specified number of pixels, and Vertical offset will move the image to the right by the specified number. Only positive numbers are allowed. The default value for both fields is 0.

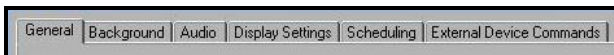
**Scale:** Controls the size of the logo image, with the value being expressed as a percentage (i.e., 100 is the images original size, 200 is double the original size). The default for this value is 100.

## Scheduling and Other Page Settings

Every page in a project has what are called “Properties.” These are settings other than those that control the actual contents of the page. For example, the duration a page appears and the transition effect used are page properties.

Click on a page in the project view to highlight it, and click on the “Page Properties” button to view the property sheets for that page.

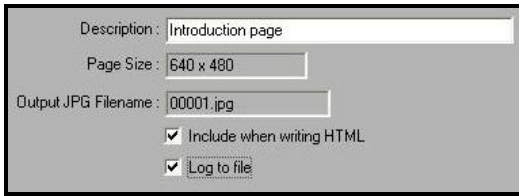
The Page Properties dialog is divided into multiple tabs.



On Video Overlay pages, the ‘Background’ tab will be replaced with a ‘Video Overlay’ tab.

### General

The “General” tab allows you to name the page and see some statistics about that page.



**Description:** This is a short description of the contents of your page. This description shows up in the Project Editor next to the page number. This description is for your own reference only. Video overlay pages that trigger Adtec MPEG clips will display the clip name in place of the description in the thumbnail view.

**Page Size and Output JPG Filename:** All pages will indicate a Page Size. This is the resolution of the JPEG file that is output by Memo Composer and displayed on the playback system. This resolution is determined when the project is created, and cannot be changed afterwards.

The actual name of the file is shown as well, allowing you to locate that file on your hard drive.

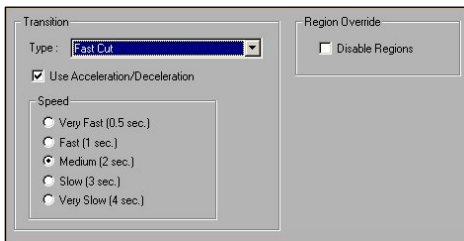
**Include When Writing HTML:** Memo Composer Professional writes pages as HTML files as well. Uncheck this box if you don't want the page written as HTML.

**Log to File:** Check this box to Include this page in playback records written to the Memo unit. These logs are reserved for future use.

**Background:** For standard pages (Memo pages), the page background is set here. Refer to the 'Background' section of the chapter, "Creating and Adding Content".

## Display Settings

The "Display Settings" tab contains settings for the transition effect that is used to bring the page on-screen, and the speed of that transition.

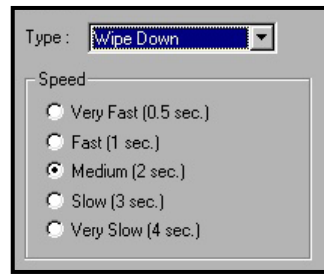


From here you can also disable regions (crawl lines) for the particular page.

**Transitions:** As each new page is displayed by the player, it can appear to "wipe" onto the screen

using several different methods. The Transition Type pull-down menu allows you to select from these different methods.

The “Fast Cut” transition means to have an instantaneous switch from one page to the next. If ‘Random’ is selected, a random transition and transition speed will be selected for the page.

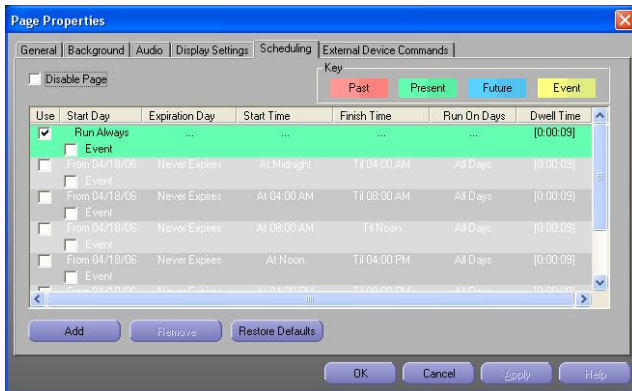


The Transition Speed determines how fast a page appears to wipe onto the screen when played. If you are using the “Fast Cut” transition, the speed is ignored.

**Disable Regions:** Check this box to turn off the display of crawl regions for the selected page.

## Scheduling

The Scheduling tab allows you to place various conditions and restrictions on pages that determine when they will appear on screen.



By default, a page is set to “Run Always” upon being created, meaning that the page shows up each time the playback system repeats through the project. With page scheduling, you can direct pages to follow a schedule – playing only during allowed times, or playing at specific times.

Each row in this table can be thought of as an additional filter. Composer will look at the first row and determine if the entry is valid. If it is, the page is allowed to play. If not, Composer continues searching for a valid entry. If all entries are invalid, the page is skipped.

Memo Composer Standard allows for 3 entries, while Professional supports an unlimited number.

**Disable Page:** Check this box to disable the page completely. All other options will be greyed-out when this is checked.

Key: The top-right corner of the page shows the color-coded key used to display the status of a particular time domain range. If a range is set



to expire on Saturday at 8:00am, then at 8:01am that range will display in

Composer as red. Current ranges will display in green, those specifying future dates will show in blue, and pages tagged as Events will display as yellow.



Use: The “Use” checkbox will enable or disable a specific range.

This can be useful to dramatically change a pages scheduling with just a few clicks of the mouse. Multiple fields can be used to establish very different schedules, and they can be toggled between easily by checking the Use box.

### Regular Scheduling

Regular scheduling is used to make a page expire on a specific date, or be valid only during certain times or on certain days of the week.



Click on the first field to highlight it, and click again on the Run Always text in the Start Date field.

To establish a schedule, uncheck the Run Always box and click on the drop-down box to reveal the calendar control.

Use the left and right arrows at the top of the calendar to find the appropriate month, and then click once on the desired date to select it. For this example, October 9, 2003 has been selected as the beginning date for this page.



Click anywhere off of the date select control, and you will see the effect these changes have made.

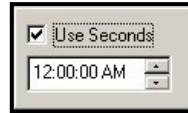


The selected start date is shown, and the Expiration Date is set to “Never Expires”. Click on the line again to highlight it, and click once

on “Never Expires” to bring up the expiration date control.

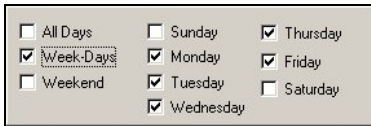
Uncheck “Never Expires”, and use the calendar tool to select the expiration date for the page.

Memo Composer also allows you to restrict pages with regard to time. Select the range you wish to modify, and click once on the **Start Time** field.



The hour, minute, and second (if enabled) fields can be selected independently. The up and down arrows to the right can be used to change the highlighted value (alternatively, the up and down arrow keys on the keyboard can be used, and numbers can be typed in specifically as well).

Finally, Memo Composer allows you to schedule pages with regard to Day of Week. Click once on your range to select it, and click on the “Run on Days” field to bring up the day selector.



Select the days you want the page to display by putting a check in the box to their left. The “All Days”, “Week-Days”, and “Weekend” checkboxes will select the associated days automatically.

The far right column of the time domain table shows the Dwell Time, or page duration – and allows you to change it.



Click once on the desired range to highlight it, then click on the Dwell Time field to bring up the dwell time selector.



When first created, a page will be set to “Use Project Default” (discussed in the Project Properties section). Uncheck that and then modify the dwell time as desired.

## Regular Scheduling Examples

Here are some examples of regular scheduling along with a description of what is being done.

<input checked="" type="checkbox"/>	From 05/10/07	Thru 05/24/07	From 06:00 AM	Til 04:00 PM	. M . W . F .	0:00:30
<input type="checkbox"/>	Event					

This page will play for 30 seconds at a time between the hours of 6am and 4pm on every Monday, Wednesday, and Friday that falls between the date range of 5/10/07 and 5/24/07.

<input checked="" type="checkbox"/>	From 05/10/07	Thru 05/24/07	From Midnight	Til Midnight	. M . W . F .	0:00:30
<input type="checkbox"/>	Event					

To make the page play at all times of day during that same date range, simply change both the starting and ending times to midnight. This makes the page valid 24 hours a day.

<input checked="" type="checkbox"/>	From 05/10/07	Thru 05/24/07	From 06:00 AM	Til 04:00 PM	. M . W . F .	0:00:30
<input type="checkbox"/>	Event					
<input checked="" type="checkbox"/>	From 05/10/07	Thru 05/24/07	At 04:00 PM	Til Midnight	. M . W . F .	0:00:15
<input type="checkbox"/>	Event					

Building on the first example, the second range shown here adds a second condition – play for 15 seconds at a time from 4pm to midnight.

# Appendix A – Weather

This section will explain how to use the optional Weather Station with the Memo system.

**✓ Optional Feature**

The Weather Station is an optional component to the Memo system. It is available in basic or deluxe versions (part numbers AVW1 and AVW2, respectively)

The Weather Station is a collection of sensors that attach to a centrally located junction box. Also attached to this junction box is an Ultimeter, which provides local display of the weather data. This Ultimeter also connects to a communications port on the Memo, allowing weather data to be displayed within a project.

This section provides a quick reference of the steps needed to properly install the Memo Weather System. For complete documentation of the Weather Station's features, refer to the manual enclosed in the Ultimeter box.

Included in the Memo Weather Station:

- Ultimeter 800 (Basic) or Ultimeter 2100 (Deluxe)w/stand

- Junction Box w/Power Adapter and Mounting Bracket
- Temperature Sensor
- Anemometer (Wind Vane) w/3 Cups
- Junction Box Cable
- Rain Gauge
- Memo Data Logger Cable
- Humidity Sensor (Deluxe only)

## Before You Start

Take a few moments before installation to do the following:

**Set the Ultimeter's date & time** – This is outlined on page 24 of the weather station's manual.

**Set the Ultimeter's leap year** – This is outlined on page 24 of the weather station's manual.

**Set the Barometric Pressure** – This is outlined on page 25 of the weather station's manual.

**Plan the installation** – Suggested cable lengths and some additional tips can be found on page 15 of the weather manual.

## Installing the Memo Weather Station

Installing the Memo Weather Station is done in just a few steps. The indoor hardware (Junction Box and Ultimeter) must be installed in sensible locations, and many of the Sensors have specific requirements to ensure accurate collection of weather data.

### Installing the Junction Box

The Junction Box is the central piece that all other devices in the Weather System attach to. It must be installed indoors, and near a power outlet. Once attached to the wall with the mounting bracket, plug in the AC power adapter.

### Connecting to the Ultimeter

Connect the Junction Box and Ultimeter using the cable provided.


This cable uses a connector that is slightly wider than the connectors used for the weather sensors, and will only plug in to 1 port on the Junction Box. Attach the other end to the port on the underside of the Ultimeter.

As you attach sensors to the Junction Box, verify that the Ultimeter is able to display the appropriate data. Page 3 of the Weather System manual describes the function of each key on the Ultimeter.

### Installing the Temperature or Humidity Sensor

The Temperature or Humidity Sensor connects to the port on the Junction Box indicated by this icon:



 The Deluxe Kit includes a Humidity Sensor. With it attached to the Junction Box, the Temp. Sensor is not used. Attaching the Temp. Sensor to another port on the Junction Box will result in incorrect weather data.

Refer to page 17 of the Weather Station manual for specific mounting and sensor placement tips.

### Installing the Anemometer (Wind Vane)

The Anemometer connects to the port on the Junction Box indicated by this icon:



Refer to pages 12 and 19 of the Weather Station manual for additional information on the Anemometer.

### Installing the Rain Gauge

The Rain Gauge connects to the port on the Junction Box indicated by this icon:



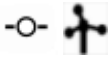
Ensure that the Rain Gauge is installed in a location where rainfall will be completely unobstructed.

### Connecting to the Memo

Weather Data is delivered to the Memo using the included Memo Data Logger Cable.

Connect one end of the cable to the port on the side of the Ultimeter, and plug the other end into the port labeled COM2 on the back of the Memo.


Once the connection is made, press and hold the following keys together for 3 seconds:



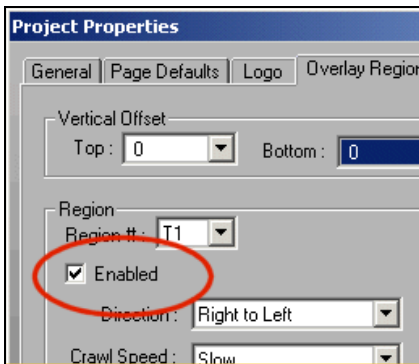
The display should blink approximately 3 times, and return to normal. The Ultimeter is now set to output Serial Data in a way that the Memo can understand.

## Using the Weather Station with Memo Composer

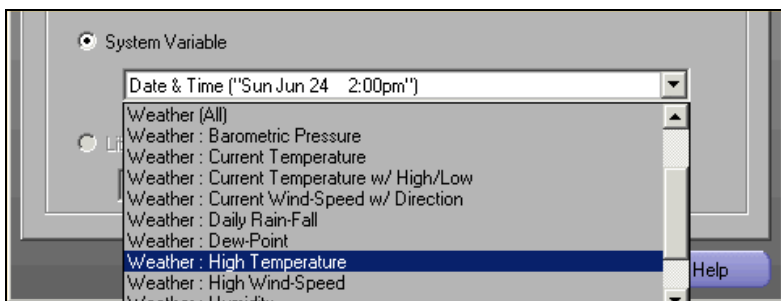
With the Weather Station hardware installed, the final step is to configure the project to display the desired weather data.

 Weather information on the Memo is displayed in Overlay Regions, or Crawl Lines. For more information on Overlay Regions, view the “Project Properties” section earlier in this manual.

Open the project that the weather data will be shown in, and click on the “Project Properties” button. Select the “Overlay Region” tab. Enable the region that the weather data will be placed in by checking the “Enabled” box.



Now select the “Overlay Content” tab. Select the enabled region from the drop-down box at the top, and click on the “Add” button. Select “System Variable”, and the list of available weather fields can be viewed.



**Weather (All):** Displays the current temp with Hi/Low, Wind Speed/Direction, high wind speed, humidity\*, heat index\*, and barometric pressure\* (\* = deluxe weather station only).

**Barometric Pressure:** Weather Deluxe only. Displays the current barometer value with direction indicator. This value requires that an initial barometric pressure reading be programmed into the Ultimeter (see above).

**Current Temperature:** Displays the current temperature.

**Current Temperature w/ High/Low:** Display the current temperature along with High/Low values for the current day.

**Current Wind-Speed w/ Direction:** Displays the current wind-speed along with the wind direction.

**Daily Rain-Fall:** Displays the daily rainfall in inches.

**Dew-Point:** Weather Deluxe only. Displays the current dew point value. This value requires that an initial barometric pressure reading be programmed into the Ultimeter (see above).

**High Temperature:** Displays the high temperature value for the day.

**High Wind-Speed:** Displays the high wind-speed reading for the day

**Humidity:** Weather Deluxe only. Displays the current humidity reading.

**Low Temperature:** Displays the low temperature reading for the day.

**Monthly Rain-Fall:** Displays the cumulative rain-fall for the current month.

**Wind Chill:** Displays the calculated wind chill value. This value is only valid if the current temperature is below 45 degrees, and the current wind-speed is above 5mph. If these requirements are not meant, the wind chill value will be skipped during playback.

# Frequently Asked Questions

## **I cannot publish using a direct serial connection**

Direct serial publishing requires the use of a Null Modem serial cable. A standard “straight-through” serial cable will not work. An appropriate serial cable ships with every Memo system. If you have lost this cable or require a new one, you can contact [support@magicboxinc.com](mailto:support@magicboxinc.com) to order one.

## **Can I set the Memo to operate in DHCP mode on my network?**

We recommend using a static IP address when configuring the Memo for use on a network. For further assistance, contact technical support.

## **I installed the Memo behind a firewall and cannot publish.**

Ethernet publishing traffic to the Memo happens on port 427. This port must be open between the publishing PC and the Memo. This port is used by Memo Composer as well as the Memo E-Blast application.

## **What image types are supported by the Memo?**

Memo Composer will recognize images with the following extensions: .JPG, .JFIF, .PCD, .PCX, .PNG, .TGA, .TIF, .WMF, .WPG, .BMP, .JP2, and .GIF. Currently only static .GIF images (non-animated) are supported.

## **Can I preview my project in Composer before publishing it?**

Memo Composer version 2.90 and later includes Project Preview as part of the Professional edition of the software.

## **I am having difficulties getting my logo to display transparently.**

Logo images use the color green (RGB value 0, 255, 0) as the transparency key color. Any area of the image that you wish to show as transparency will need to be filled with this color. View the following URL for an example of the MagicBox, Inc logo, as used in the Factory Demo project:

[http://magicboxinc.com/images/rabbit\\_logo\\_transparency.bmp](http://magicboxinc.com/images/rabbit_logo_transparency.bmp)

## **What are the power consumption specifics of the Memo?**

USA 120V Service at 60 Hz  
Peak Amp Draw 0.75 A 90 Watts  
Normal Amp Draw Below 0.62 A 74.4 Watts

### **Can I use content from Microsoft PowerPoint in a project?**

PowerPoint allows you to save a presentation as a series of .JPG images – these images can these be used within Composer. Look for this under ‘Save As...’ within PowerPoint.

### **Dew Point and Barometric Pressure weather values are not displaying**

The Ultimeater included with the Weather Deluxe option requires that an initial reference barometer reading be programmed in. See the Weather System Reference section for further details.

### **I receive ‘Unknown Error’ message while publishing over TCP/IP**

This is generally an indication of dropped network packets, frequently caused by very brief network outages. These message can also occur if a network is at peak capacity, during high traffic hours. Contact your network administrator to see if network conditions can be improved.

### **Can a project currently on the Memo be retrieved for editing?**

Content can only be sent to the Memo, not retrieved from it. For this reason, MagicBox highly recommends backing up the projects on your PC regularly.

### **How can I tell if my software is current?**

MagicBox regularly issues software updates for the Memo. Details about the currently available software release can be found on our website. Visit <http://www.magicboxinc.com> and click on the ‘Update’ button.

### **What network ports are used by the Memo?**

- 427 (TCP) - used to publish from Memo Composer and E-Blast
- 123 (UDP) - Network Time Protocol (NTP) for sync to a time server
- 23 (TCP) - Telnet (optional, for support use only)
- 21 (TCP) - FTP (optional, for support use only)