

Using a Cross-over Cable for Network Connection

This document is intended to help users connect to their Avelin digital signage system by using a network cross-over cable. Follow the steps below. If you have any questions, please [contact MagicBox support](#).

Instructions

- Hook the crossover cable up to your PC's Ethernet port and then to the Avelin's Ethernet port.

Avelin Network Configuration

- Using the on-screen menu of the Avelin, arrow down to Network Settings and hit enter. *(Page 25 in the Avelin manual has information on using the Avelin's On-Screen menu)*

***Note.** *If the Avelin already has network setting information listed, you can use those settings in your PC's network configuration. Be sure to make the last number of the IP on the PC one number off.*

1. Input an internal static IP address (for example: **10.1.10.10**)
2. Input the subnet (**255.255.0.0**)
3. Input the gateway (**10.1.1.254**)
4. Don't worry about the Domain IP (DNS)

PC Network Configuration

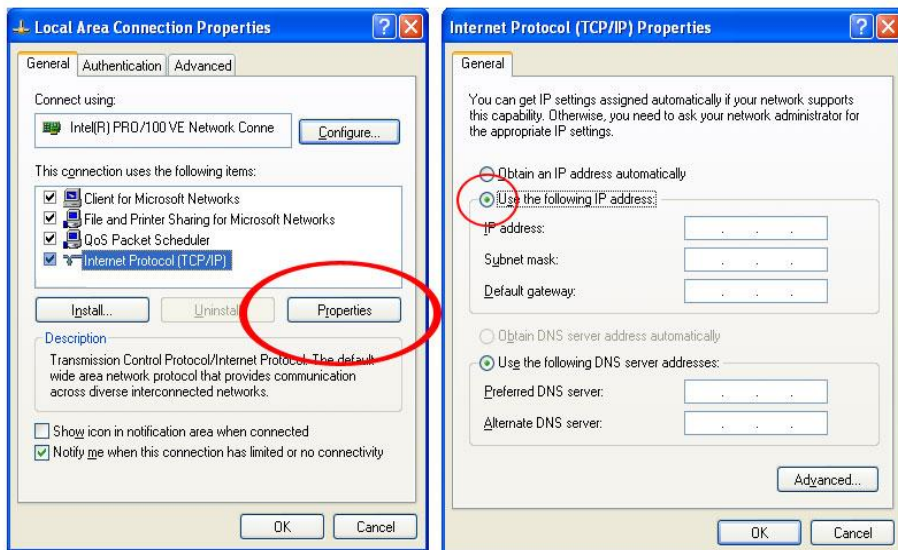
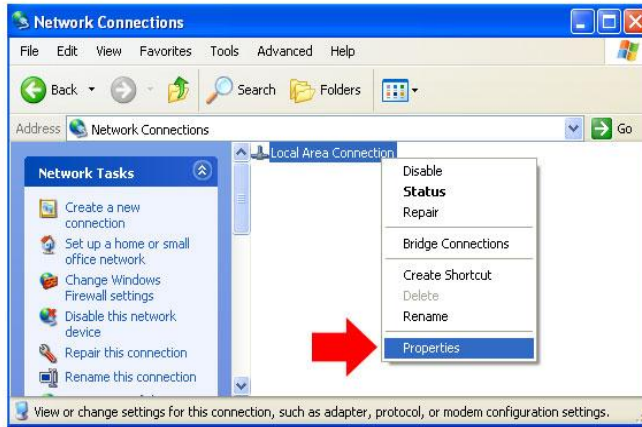
5. On the PC, go to your Network Settings Properties by going to Start/Control Panel/Network Connections
 6. Right click on the "Local Area Connection" and choose Properties *(See diagrams below)*
 7. Select, "Internet Protocol(TCP/IP)" and click "Properties"
 8. Click the radio button for "Use the following IP address"
 9. Insert an internal IP address that is one off of the Avelin's IP that you entered (for example: **10.1.10.11**)
 10. Insert the same Subnet
 11. Insert the same Default Gateway
 12. Leave the DNS server address's blank
 13. Click "OK" to save the settings.
- You will now be able to connect to the Avelin assuming a Site has been created which has the Avelin's IP address referenced in the Composer software. *(Page 32 in the Avelin manual has information on Site Setup)*

Avelin Network Diagram

Using a Cross-over Cable for Direct Connections



PC Network Configuration – Windows XP



PC Network Configuration – Windows 7

