

Topic: Saving Excel data as jpeg images



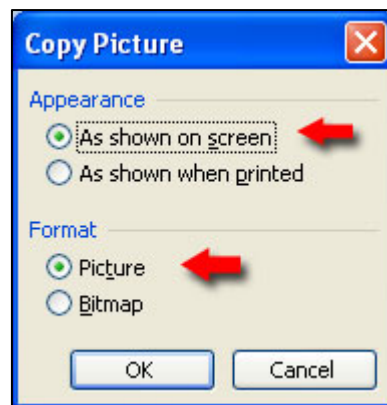
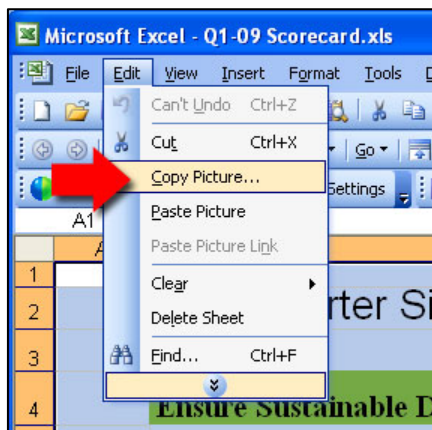
April 3, 2009

Introduction

This document will give the user a step by step procedure on how to save cell data from Excel into an image format for the purpose of using that data in Aavelin Composer Software as a page background or picture object. Excel 03' and Excel 07' methods are listed.

Excel 03'

1. Highlight the area of the spreadsheet you would like to save as a picture.
2. Then hold down the **Shift** button and go to the **Edit** menu.
3. NOTICE the paste and copy have changed to "Copy Picture" and "Paste Picture".
4. Click "Copy Picture" and choose the settings shown.



5. Now you have the image placed on your Clipboard.
6. Open an image editing program such as MS Paint or Photoshop.
7. Create a new file and make it the dimension size that you wish to use. For example, if your Aavelin project is 1280x720, then that is the size you need create the new file as. This will ensure the highest image quality since you won't be scaling the image.
8. Press **Ctrl-V** on your keyboard to paste the image to the stage of your program.
9. Save the file a jpeg or other image format.

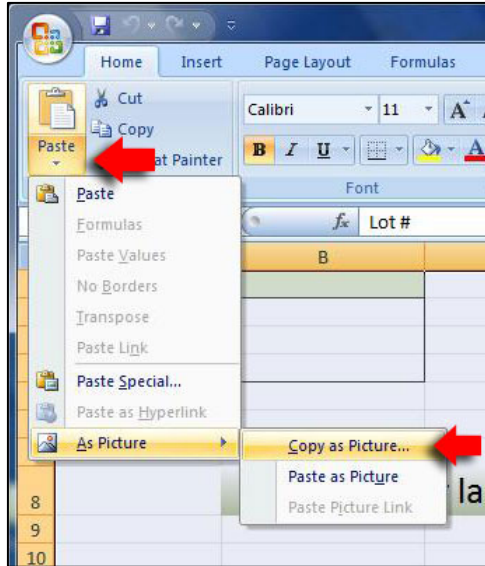
NOTE: If you do not want to show the Grid Lines in your image, follow the steps below.

1. On the **Tools** menu, click **Options**.
2. On the **View** tab, under **Window options**, clear or select the **Gridlines** check box to hide or show the gridlines.

Continued on page2

Excel 07'

1. On the worksheet or chart sheet, select the cells or click the chart or object that you want to copy as a picture.
2. On the **Home** tab, in the Clipboard group, click the arrow below Paste, click **As Picture**, and then click **Copy as Picture**.



3. Now you have the image placed on your Clipboard.
4. Open an image editing program such as MS Paint or Photoshop.
5. Create a new file and make it the dimension size that you wish to use. For example, if your Aavelin project is 1280x720, then that is the size you need create the new file as. This will ensure the highest image quality since you won't be scaling the image.
6. Press **Ctrl-V** on your keyboard to paste the image to the stage of your program.
7. Save the file a jpeg or other image format.

NOTE: If you do not want to show the Grid Lines in your image, follow the steps below.

1. Click the Microsoft Office Button, and then click Excel Options.
2. In the Advanced category, under Display options for this worksheet clear the Show gridlines check box.

MagicBox, Inc.
1600 SW Western Suite #130
Corvallis, OR 97333
541-752-5654
www.magicboxinc.com