



MagicBox Avelin

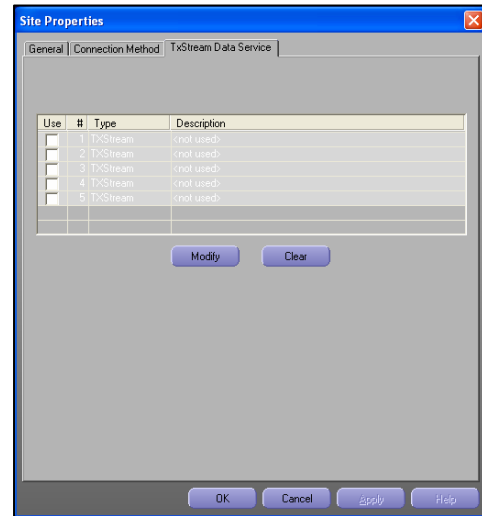
TxStream Users Guide

TxStream – Configuring NOAA Weather

TxStream is a subscription Data Feed Service from MagicBox. Using TxStream, customizable weather forecasts for a specific geographic region and news data feeds can be displayed as crawling text on screen. (For News Data feed configuration, see Page 3)

To configure the NOAA information to be displayed, click on the Setup button within Avelin Composer and select the 'Sites' tab. Double-click on the desired site and select the 'TxStream Data Service' tab.

TxStream requires that the Avelin has a network connection that can communicate with the TxStream Data Server at MagicBox. This may require changes to your network configuration and should be handled by your on-site network administrator. TxStream uses TCP port 4455.

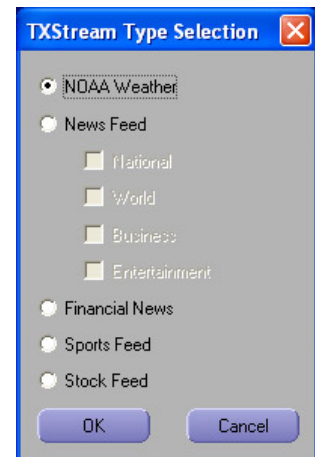


Weather TxStream (1-5)

TxStream allows you to define 5 different geographical locations to receive weather forecasts for. To select an area, click on 'TxStream 1' to highlight it and click on the 'Modify' button.

TxStream Type Selection

This window allows you to choose the type of data that will be pulled from the server for the particular TxStream 1-5 option chosen. NOAA Weather is the selection we want at this point. Click "OK" and you will see the "NOAA Settings" window pop up.

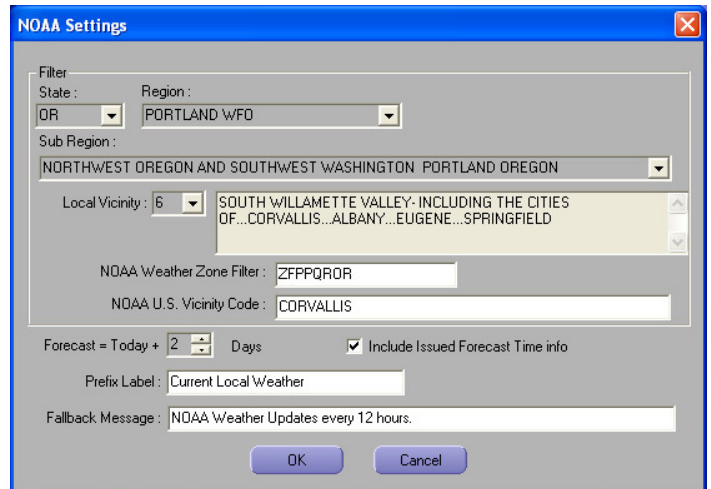


NOAA Settings

This window allows you to choose the location that you would like the NOAA forecast weather from. Simply populate the fields with your region's information. The following steps will help you get the correct information populated.

State, Region, Sub-Region

Begin by selecting the state whose data you wish to receive. The 'Region' list will be populated with available regions for that state. In some cases, regions from bordering states may be shown if there is a densely populated area nearby. Select the appropriate Sub-Region next, if more than one is available.



Local Vicinity

This field lists the actual cities/towns for which the weather data is valid. Find your city by browsing through the Vicinity list. Not all cities may be listed – if yours is not, select the closest available city.

NOAA Weather Zone Filter

This field is populated from the Local Vicinity selection that you chose. NOAA changes these zone filter codes periodically so the Zone filter code you select may have changed. Contact MagicBox Inc. for verification of your Zone Filter or go to <http://www.weather.gov/view/states.php> to locate the Zone filter yourself.

The above URL will take you to the current data directly from NOAA. This is used to determine if the precise location you chose is covered, or if a nearby region must be used instead.

For example, click on *Oregon* and *Zone Forecast*. From here, you can search for cities to see if forecast data is reported. Search for *Lebanon* and there are no results – anyone wishing to receive a feed for Lebanon will have to rely on a nearby city instead. Search for *Albany* and a result is found. Scroll up from the city that we will be using until the Zone Region header is found – it will look like this:

```
000
FPUS56 KPQR 041720
ZFPPQR
```

The region identifier is ZFPPQR – append the 2-letter state abbreviation of your state on to the end, and we have the NOAA Weather Zone Filter that we will place in Composer – ZFPPQROR.

NOAA U.S. Vicinity Code

Put the name of your city in the 'Local Vicinity' field **using all caps**. Changing this field is recommended if the Fallback Message (see below) is displayed for an extended period of time.

Forecast = Today + X Days

Change this value to define the length of the forecast. Allowable values are 0 (today only) to 7 (8 days total forecast).

Include Issued Forecast Time Info

If this option is checked, the date/time information of the forecast will be displayed between the Prefix label (see below) and the actual forecast data.

Prefix Label

This is the text label that will be displayed at the beginning of the forecast.

Fallback Message

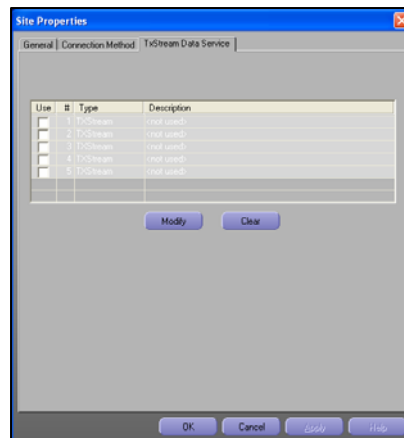
This is the text string that will be displayed if no forecast data is available. This can happen if updated satellite data has not been received by the TxStream Data Server, or if service has been denied (invalid subscription, etc).

Aavelin Composer Set-Up

Once a TxStream item has been completely defined in the Set-Up window, you can choose to display it in an Overlay Region within a project (view the section titled 'Overlay Region Tab' in the Aavelin manual for further information on this). When adding an item on the Overlay Content tab, select 'TxStream1-5' and pick the appropriate listing. You can then publish the project to the site and your forecast data will be displayed. (Please allow 5-10 minutes for the data to be pulled and sent to your Aavelin)

TxStream – Configuring News Feeds

To configure the News Feed information to be displayed, click on the "Setup" button within Aavelin Composer and select the 'Sites' tab. Double-click on the desired site and select the 'TxStream Data Service' tab.



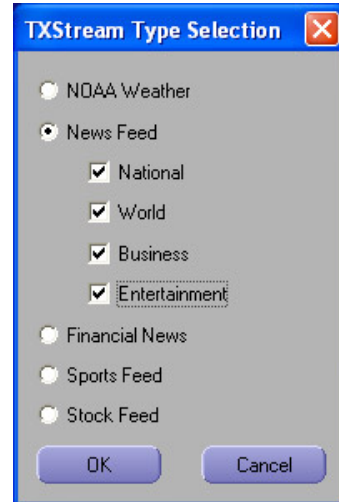
Data Feed TxStream (1-5)

TxStream allows you to populate and define 5 different TxStream fields with individual news feeds or all of the news feeds. For Example: TxStream1 could be National News or it could be National and World News. TxStream2 could be Business News and Entertainment News or it could be all 4 news options. TxStream3 could be Financial News or a Sports Feed. By defining which TxStream field (1-5) has which data, you can then have your news feeds displaying in any of the 4 overlay crawl regions available on the Avelin system. To select an area, click on 'TxStream 1' to highlight it and click on the 'Modify' button.

TxStream Type Selection

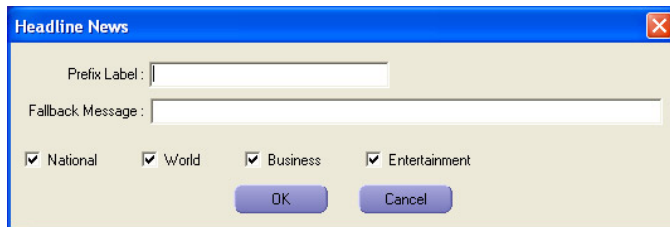
This window allows you to choose the type of data that will be pulled from the server for the particular TxStream 1-5 option chosen. Select the "News Feed" option and then check the boxes of which news feed you would like for this TxStream choice. ****NOTE: Financial, Sports, and Stock feeds will have to be selected as a separated TxStream item. (TxStream 1-5)***

Once you have chosen the news feeds you want, click "OK" and you will see the "Headline News" window pop up.



Headline News Window

This is where you put in the "Prefix Label" or the text you want displayed before the news feeds begin. For Example, you may want to type, "MagicBox Headline News".



The "Fallback Message" is the text that will be displayed if no news data is available. This can happen if updated satellite data has not been received by the TxStream Data Server, or if service has been denied (invalid subscription, etc).

Avelin Composer Set-Up

Once a TxStream item has been completely defined in the Set-Up window, you can choose to display it in an Overlay Region within a project (view the section titled 'Overlay Region Tab' in the Avelin manual for further information on this). When adding an item on the Overlay Content tab, select 'TxStream1-5' and pick the appropriate listing. You can then publish the project to the site and your news data will be displayed. (Please allow 5-10 minutes for the data to be pulled and sent to your Avelin)