



# MagicBox Aavelin




## Weather System – Installation Reference

*This guide will outline steps necessary to properly install the Aavelin Weather System. The intention of this document is to allow you to install your weather system quickly, allowing you to use it now. We highly recommend reading the full manual once the station is setup, as more advanced information and helpful tips can be found there.*

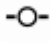

### **Before you start:**

- Set the leap year on the Ultimeter: Described on Page 24 of the weather manual.
- Set the date/time on the Ultimeter: Described on Page 24 of the weather manual.
- Plan your installation: Cable lengths and some helpful tips can be found on Page 15 of the weather manual.

### **Setting up the Aavelin Weather Station:**

- Mount the junction box to a wall, or otherwise secure it.
- Attach the sensors to the junction box ports as follows:
  -  - Connect the wind sensor (anemometer) here.
  -  - Connect the temperature sensor **OR** the humidity sensor (optional) here.
  -  - Connect the rain gauge (optional) here.
- Connect one end of the junction box cable to the underside of the Ultimeter. Connect the other end of the cable to the junction box. This cable uses a slightly wider connection plug, and will only fit in one port on the box.
- Connect the AC power adapter to the small round plug on the junction box.
- Connect the Data Logger cable from the side port of the Ultimeter, to the port labeled 'Com 2' on the back of the Aavelin player.

### **Finishing up:**

- Place Ultimeter in data logging mode. This is done by pressing the  and  keys together, and holding them down for about 3 seconds. You should see the display flash several times, then solidify.
- Verify that the data on the Ultimeter's display is correct. If it is not, check your connections as well as the placement of your sensors.
- For backup purposes, we recommend using a 9V battery in the Ultimeter in addition to AC power.

**NOTE:** Refer to Page 17 of the manual for important information regarding temperature sensor placement. Several criteria

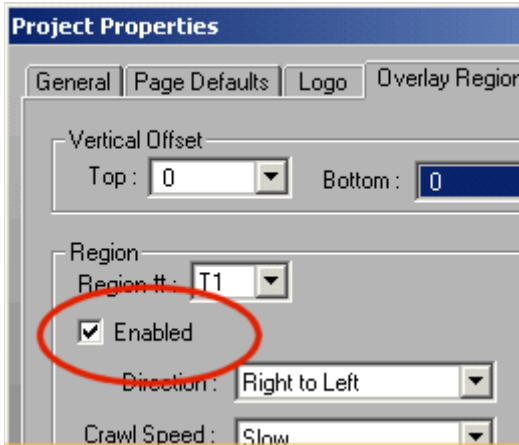
Your weather station hardware is now setup. Now we will show how to put the system to use by placing weather data into your Aavelin project.

**Using Weather in Aavelin Composer:**

Weather data is displayed in Overlay Regions, or crawl lines. You can either put weather data in a region you are already using, or enable a new region specifically for weather.

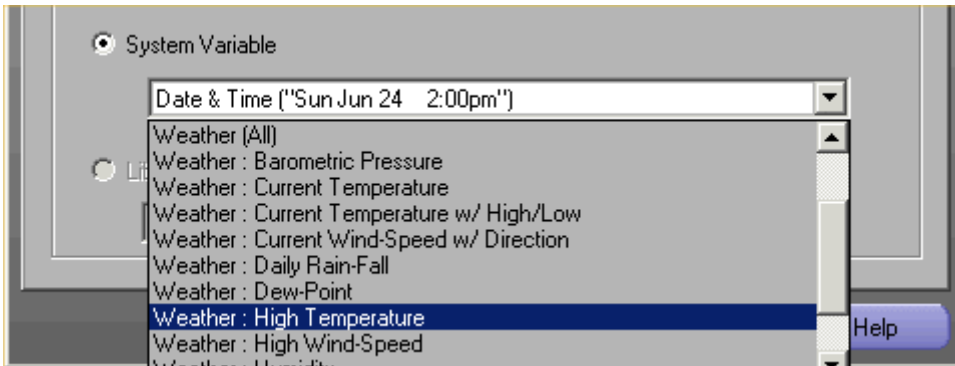
Open the project you want to place weather data in, and click on the 'Project Properties' button. Select the 'Overlay Region' tab.

Enable the region you want weather in by checking the 'Enabled' box as shown.

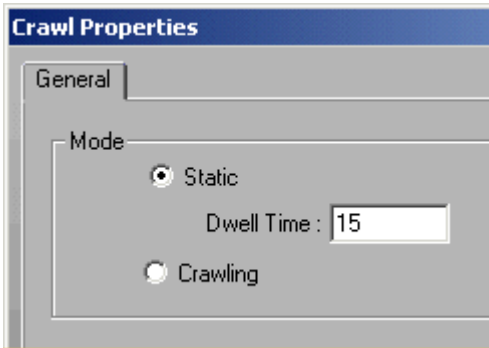


Now select the 'Overlay Content' tab. Using the drop-down box at the top, select a region you have enabled and click on the 'Add' button.

Select 'System Variable' and you can browse through the available options as shown.



You can use 'Weather (All)' to cycle through all weather information, or select an individual data type, press the 'Ok' button, and then 'Add' an additional type(s) if you only want select information displayed.



For each crawl line entry, you can specify if you would like it to be a static, non-moving object with a specified duration, or crawling (with the direction and speed of the crawl noted on the 'Overlay Region' tab of the Project Properties dialog).