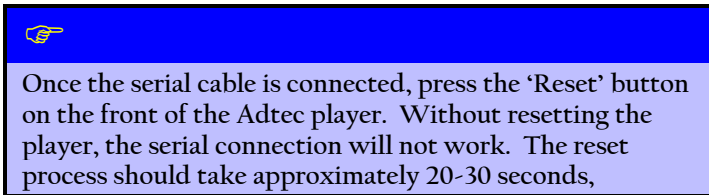


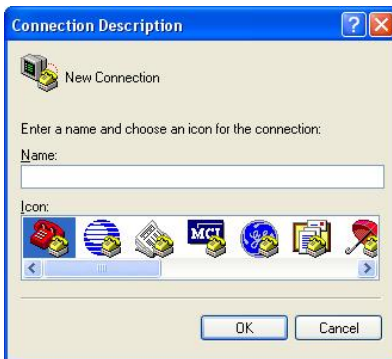
Adtec MPEG Player Setup

Adtec MPEG Players supported by the Aavelin require some specific configuration before they are able to be triggered automatically by the Aavelin player unit. The Adtec player must be placed on the network as all communication between it and the Aavelin takes place via Ethernet.

To configure the Adtec player's network settings, use the RJ-11 to DB-9 serial cable included with the Adtec player. Connect the DB-9 end of the cable to a serial port on your PC, and the RJ-11 end to the 'RS232 In' port on the back of the Adtec player.



With the serial cable in place, use the HyperTerminal program included with Windows to connect to the player and make changes. Click on 'Start', 'Run', type in 'hypertrm' and press 'Ok'.



Enter a name for the new connection and press 'Ok'



Under the 'Connect Using' field, select the COM port the serial cable is connected to on your PC, and press 'OK'.



Set the COM port properties as pictured above.

Bits per second: 38400

Data bits: 8

Parity: None

Stop bits: 1

Flow control: Xon/Xoff


Press the 'OK' button to connect.

The network addresses can be set using the following commands. Note that each command is preceded with '*' (the asterisk character [shift-8] and a space)

IP Address: * ipa xxx.xxx.xxx.xxx

Subnet Mask: * ipm xxx.xxx.xxx.xxx

Gateway: * gip 0 xxx.xxx.xxx.xxx

 **Note:** Multiple gateway addresses are allowed. In the example above, the primary gateway is set. To set additional gateway addresses, change the 0 to 1-3 (4 total address allowed).

Additional commands can be issued while connected to change various settings of the player. Some of the more common commands are listed here.

Blanking

Sets the output of the Adtec player when no spot is being played.

Recommended: Black

* bl black

Repeat

Causes MPEG spots to play repeatedly. Default is on, recommended:

Off

* rpt off

Startup

When on, the player will begin playing clips immediately upon startup.

Recommended: On

* stu off

DVD Copying

Two commands that ease the loading of MPEG spots via the DVD drive. When enabled, MPEG spots on a DVD will be automatically copied to the player's hard drive, and the DVD will be ejected from the drive when done. Applies to the Edje DVD only.

* dej on

* dup 1

XCP Protocol Support

XCP is an alternate connection protocol that the Avelin will use if it is enabled, and improves timing and accuracy. Recommended: On

* xcp on

Saving Changes

When finished, the following command commits the changes to memory.

* cfg save